

## C1qA antibody

Cat. No. GTX112883

Host	Rabbit
Clonality	Polyclonal
Isotype	IgG
Application	WB, ICC/IF, IHC-P
Reactivity	Human

Package  
100 µl, 25 µl

## APPLICATION

## Application Note

\*Optimal dilutions/concentrations should be determined by the researcher.

Suggested dilution	Recommended dilution
WB	1:500-1:3000
ICC/IF	1:100-1:1000
IHC-P	Assay dependent

Not tested in other applications.

Calculated MW 26 kDa. ( [Note](#) )

## PROPERTIES

Form	Liquid
Buffer	PBS, 20% Glycerol
Preservative	0.025% ProClin 300
Storage	Store as concentrated solution. Centrifuge briefly prior to opening vial. For short-term storage (1-2 weeks), store at 4°C. For long-term storage, aliquot and store at -20°C or below. Avoid multiple freeze-thaw cycles.
Concentration	1.18 mg/ml (Please refer to the vial label for the specific concentration.)
Immunogen	Recombinant protein encompassing a sequence within the center region of human C1qA. The exact sequence is proprietary.
Purification	Purified by antigen-affinity chromatography.
Conjugation	Unconjugated

## Note

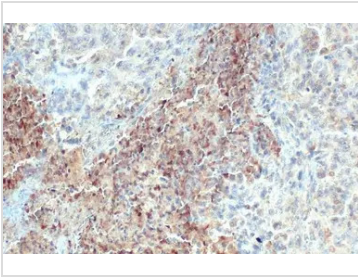
For laboratory research use only. Not for any clinical, therapeutic, or diagnostic use in humans or animals. Not for animal or human consumption.

Purchasers shall not, and agree not to enable third parties to, analyze, copy, reverse engineer or otherwise attempt to determine the structure or sequence of the product.



For full product information, images and publications, please visit our [website](#).

## DATA IMAGES



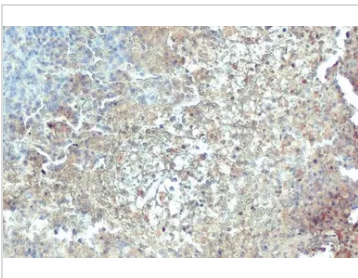
### GTx112883 IHC-P Image

C1qA antibody detects secreted C1qA protein by immunohistochemical analysis.

Sample: Paraffin-embedded human lung cancer.

C1qA stained by C1qA antibody (GTx112883) diluted at 1:500.

Antigen Retrieval: Citrate buffer, pH 6.0, 15 min



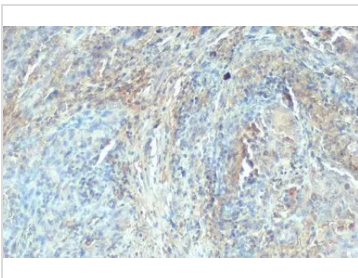
### GTx112883 IHC-P Image

C1qA antibody detects secreted C1qA protein by immunohistochemical analysis.

Sample: Paraffin-embedded human lung cancer.

C1qA stained by C1qA antibody (GTx112883) diluted at 1:500.

Antigen Retrieval: Citrate buffer, pH 6.0, 15 min



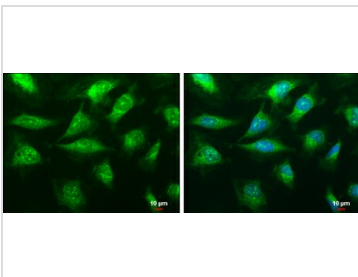
### GTx112883 IHC-P Image

C1qA antibody detects secreted C1qA protein by immunohistochemical analysis.

Sample: Paraffin-embedded human lung cancer.

C1qA stained by C1qA antibody (GTx112883) diluted at 1:500.

Antigen Retrieval: Citrate buffer, pH 6.0, 15 min



### GTx112883 ICC/IF Image

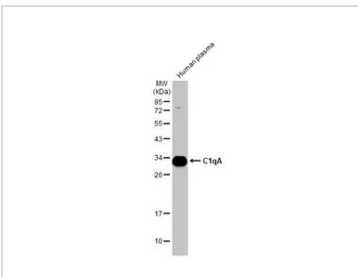
C1qA antibody detects C1qA protein at cytoplasm by immunofluorescent analysis.

Sample: HeLa cells were fixed in ice-cold MeOH for 5 min.

Green: C1qA protein stained by C1qA antibody (GTx112883) diluted at 1:100.

Blue: Hoechst 33342 staining.

Scale bar = 10  $\mu$ m.



### GTx112883 WB Image

Human plasma (30  $\mu$ g) was separated by 12% SDS-PAGE, and the membrane was blotted with C1qA antibody (GTx112883) diluted at 1:10000. The HRP-conjugated anti-rabbit IgG antibody (GTx213110-01) was used to detect the primary antibody.



For full product information, images and publications, please visit our [website](https://www.genetex.com).