

## p21 Cip1 antibody

**Cat. No. GTX112898**

<b>Host</b>	Rabbit
<b>Clonality</b>	Polyclonal
<b>Isotype</b>	IgG
<b>Applications</b>	WB, ICC/IF, IHC-P
<b>Reactivity</b>	Human, Chicken

References ( 9 )

★★★★★ Review ( 1 )

Package

100 µl, 25 µl

## Applications

**Application Note**

\*Optimal dilutions/concentrations should be determined by the researcher.

Suggested dilution	Recommended dilution
WB	1:500-1:3000
ICC/IF	1:100-1:1000
IHC-P	1:100-1:1000

Not tested in other applications.

**Calculated MW** 18 kDa. ( [Note](#) )

## Properties

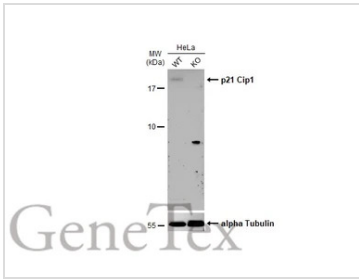
<b>Form</b>	Liquid
<b>Buffer</b>	PBS, 20% Glycerol
<b>Preservative</b>	0.025% ProClin 300
<b>Storage</b>	Store as concentrated solution. Centrifuge briefly prior to opening vial. For short-term storage (1-2 weeks), store at 4°C. For long-term storage, aliquot and store at -20°C or below. Avoid multiple freeze-thaw cycles.
<b>Concentration</b>	1 mg/ml (Please refer to the vial label for the specific concentration.)
<b>Immunogen</b>	Recombinant protein encompassing a sequence within the center region of human p21 Cip1. The exact sequence is proprietary.
<b>Purification</b>	Purified by antigen-affinity chromatography.
<b>Conjugation</b>	Unconjugated

**Note**

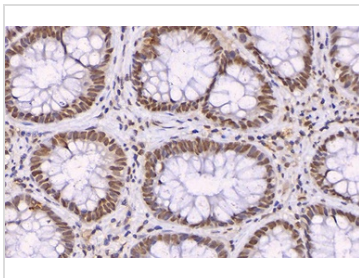
For laboratory research use only. Not for any clinical, therapeutic, or diagnostic use in humans or animals. Not for animal or human consumption.

Purchasers shall not, and agree not to enable third parties to, analyze, copy, reverse engineer or otherwise attempt to determine the structure or sequence of the product.

For full product information, images and publications, please visit our [website](#).

**DATA IMAGES**

**GTX112898 WB Image**

Wild-type (WT) and p21 Cip1 knockout (KO) HeLa cell extracts (30 µg) were separated by 15% SDS-PAGE, and the membrane was blotted with p21 Cip1 antibody (GTX112898) diluted at 1:500. The HRP-conjugated anti-rabbit IgG antibody (GTX213110-01) was used to detect the primary antibody, and the signal was developed with Trident ECL plus-Enhanced.

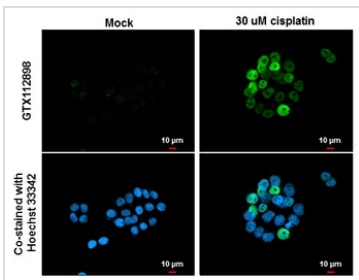

**GTX112898 IHC-P Image**

p21 Cip1 antibody detects p21 Cip1 protein at nucleus by immunohistochemical analysis (Autostainer Formulated).

Sample: Paraffin-embedded human normal colon tissue.

p21 Cip1 stained by p21 Cip1 antibody (GTX112898) diluted at 1:500.

Antigen Retrieval: EDTA buffer, 20 min


**GTX112898 ICC/IF Image**

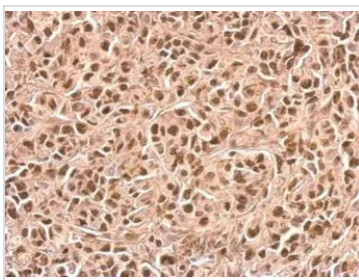
p21 Cip1 antibody detects p21 Cip1 protein at nucleus by immunofluorescent analysis.

Samples: HeLa cells mock (left) and treated with 30 µM Cisplatin for 24 hrs (right) were fixed in 4% paraformaldehyde at RT for 15 min.

Green: p21 Cip1 protein stained by p21 Cip1 antibody (GTX112898) diluted at 1:500.

Blue: Hoechst 33342 staining.

Scale bar = 10 µm.


**GTX112898 IHC-P Image**

p21 Cip1 antibody detects CDKN1A protein at nucleus on SkHep1 xenograft by immunohistochemical analysis.

Sample: Paraffin-embedded SkHep1 xenograft.

p21 Cip1 antibody (GTX112898) dilution: 1:500.

Antigen Retrieval: Trilogy™ (EDTA based, pH 8.0) buffer, 15min



For full product information, images and publications, please visit our [website](#).