

FLI1 antibody

Cat. No. GTX112937

Host	Rabbit
Clonality	Polyclonal
Isotype	IgG
Applications	WB, ICC/IF, IHC-P, IP
Reactivity	Human, Rat

References (1)

Package

100 µl, 25 µl

Applications

Application Note

*Optimal dilutions/concentrations should be determined by the researcher.

Suggested dilution	Recommended dilution
WB	1:500-1:3000
ICC/IF	1:100-1:1000
IHC-P	1:100-1:1000
IP	1:100-1:500

Not tested in other applications.

Calculated MW 51 kDa. ([Note](#))

Properties

Form	Liquid
Buffer	PBS, 20% Glycerol
Preservative	0.025% ProClin 300
Storage	Store as concentrated solution. Centrifuge briefly prior to opening vial. For short-term storage (1-2 weeks), store at 4°C. For long-term storage, aliquot and store at -20°C or below. Avoid multiple freeze-thaw cycles.
Concentration	1.22 mg/ml (Please refer to the vial label for the specific concentration.)
Immunogen	Recombinant protein encompassing a sequence within the center region of human FLI1. The exact sequence is proprietary.
Purification	Purified by antigen-affinity chromatography.
Conjugation	Unconjugated

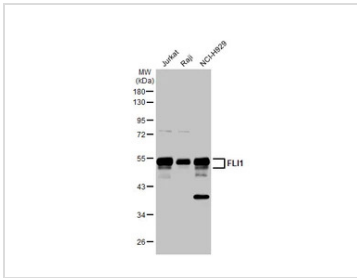
Note

For laboratory research use only. Not for any clinical, therapeutic, or diagnostic use in humans or animals. Not for animal or human consumption.

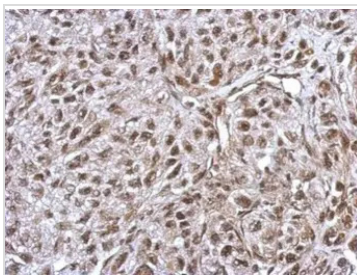
Purchasers shall not, and agree not to enable third parties to, analyze, copy, reverse engineer or otherwise attempt to determine the structure or sequence of the product.



For full product information, images and publications, please visit our [website](#).

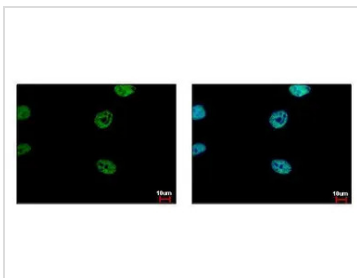
DATA IMAGES

GTX112937 WB Image

Various whole cell extracts (30 µg) were separated by 10% SDS-PAGE, and the membrane was blotted with FLI1 antibody (GTX112937) diluted at 1:1000. The HRP-conjugated anti-rabbit IgG antibody (GTX213110-01) was used to detect the primary antibody.


GTX112937 IHC-P Image

Immunohistochemical analysis of paraffin-embedded SkHep1 xenograft, using FLI1(GTX112937) antibody at 1:500 dilution.

Antigen Retrieval: Trilogy™ (EDTA based, pH 8.0) buffer, 15min

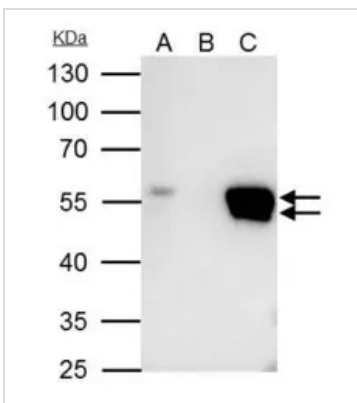

GTX112937 ICC/IF Image

FLI1 antibody detects FLI1 protein at nucleus by immunofluorescent analysis.

Sample: HeLa cells were fixed in 4% paraformaldehyde at RT for 15 min.

Green: FLI1 protein stained by FLI1 antibody (GTX112937) diluted at 1:500.

Blue: Hoechst 33343 staining.


GTX112937 IP Image

FLI1 antibody immunoprecipitates FLI1 protein in IP experiments.

IP samples: Raji whole cell extract

A. 40 µg Raji whole cell extract

B. Control with 4 µg of preimmune Rabbit IgG

C. Immunoprecipitation of FLI1 protein by 4 µg FLI1 antibody (GTX112937)

10 % SDS-PAGE

The immunoprecipitated FLI1 protein was detected by FLI1 antibody (GTX112937) diluted at 1:500.

[EasyBlot anti-rabbit IgG (GTX221666-01) was used as a secondary reagent]



For full product information, images and publications, please visit our [website](#).