

Cytokeratin 18 antibody [N3C3]

Cat. No. GTX112978

Host	Rabbit
Clonality	Polyclonal
Isotype	IgG
Applications	WB, ICC/IF, IHC-P, IHC-Wm
Reactivity	Human, Mouse, Zebrafish, Dog

References (2)

Package

100 µl, 25 µl

Applications

Application Note

*Optimal dilutions/concentrations should be determined by the researcher.

Suggested dilution	Recommended dilution
WB	1:1000-1:10000
ICC/IF	1:100-1:1000
IHC-P	1:100-1:1000
IHC-Wm	Assay dependent

Not tested in other applications.

Calculated MW 48 kDa. ([Note](#))

Properties

Form	Liquid
Buffer	0.1M Tris, 0.1M Glycine, 10% Glycerol
Preservative	0.01% Thimerosal
Storage	Store as concentrated solution. Centrifuge briefly prior to opening vial. For short-term storage (1-2 weeks), store at 4°C. For long-term storage, aliquot and store at -20°C or below. Avoid multiple freeze-thaw cycles.
Concentration	1 mg/ml (Please refer to the vial label for the specific concentration.)
Immunogen	Recombinant protein encompassing a sequence within the center region of human Cytokeratin 18. The exact sequence is proprietary.
Purification	Purified by antigen-affinity chromatography.
Conjugation	Unconjugated

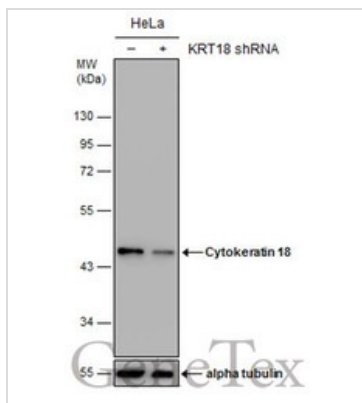


For full product information, images and publications, please visit our [website](#).

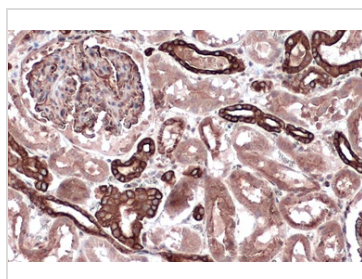
For laboratory research use only. Not for any clinical, therapeutic, or diagnostic use in humans or animals. Not for animal or human consumption.

Note

Purchasers shall not, and agree not to enable third parties to, analyze, copy, reverse engineer or otherwise attempt to determine the structure or sequence of the product.

DATA IMAGES

GTx112978 WB Image

Non-transfected (–) and transfected (+) HeLa whole cell extracts (15 µg) were separated by 10% SDS-PAGE, and the membrane was blotted with Cytokeratin 18 antibody [N3C3] (GTx112978) diluted at 1:8000. The HRP-conjugated anti-rabbit IgG antibody (GTx213110-01) was used to detect the primary antibody.

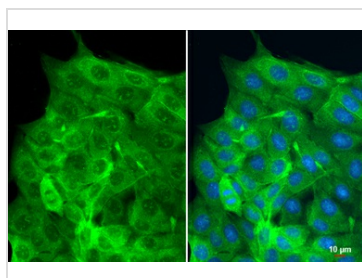

GTx112978 IHC-P Image

Cytokeratin 18 antibody detects Cytokeratin 18 protein at cell membrane and cytoplasm by immunohistochemical analysis.

Sample: Paraffin-embedded dog kidney.

Cytokeratin 18 stained by Cytokeratin 18 antibody (GTx112978) diluted at 1:500.

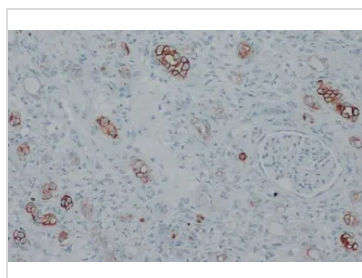
Antigen Retrieval: Citrate buffer, pH 6.0, 15 min


GTx112978 ICC/IF Image

Cytokeratin 18 antibody detects Cytokeratin 18 protein at cytoplasm and nucleus by immunofluorescent analysis.

Sample: MDCK cells were fixed in 4% paraformaldehyde at RT for 15 min.

Green: Cytokeratin 18 stained by Cytokeratin 18 antibody (GTx112978) diluted at 1:500.


GTx112978 IHC-P Image

Cytokeratin 18 antibody detects Cytokeratin 18 protein at cytoskeleton by immunohistochemical analysis.

Sample: Paraffin-embedded dog malignant nephroblastoma.

Cytokeratin 18 stained by Cytokeratin 18 antibody (GTx112978) diluted at 1:500.

Antigen Retrieval: Citrate buffer, pH 6.0, 15 min



For full product information, images and publications, please visit our [website](http://www.genetex.com).