

Tyrosine Hydroxylase antibody

Cat. No. GTX113016

Host	Rabbit
Clonality	Polyclonal
Isotype	IgG
Application	WB, ICC/IF, IHC-P, IHC-Fr
Reactivity	Human, Mouse, Rat, Zebrafish, Vole, Calf

Reference (20)

Package

100 µl, 25 µl

APPLICATION

Application Note

*Optimal dilutions/concentrations should be determined by the researcher.

Suggested dilution	Recommended dilution
WB	1:500-1:3000
ICC/IF	1:100-1:1000
IHC-P	1:100-1:1000
IHC-Fr	1:100-1:1000

Not tested in other applications.

Calculated MW 59 kDa. ([Note](#))

PROPERTIES

Form	Liquid
Buffer	PBS, 1% BSA, 20% Glycerol
Preservative	0.025% ProClin 300
Storage	Store as concentrated solution. Centrifuge briefly prior to opening vial. For short-term storage (1-2 weeks), store at 4°C. For long-term storage, aliquot and store at -20°C or below. Avoid multiple freeze-thaw cycles.
Concentration	0.21 mg/ml (Please refer to the vial label for the specific concentration.)
Immunogen	Recombinant protein encompassing a sequence within the center region of human Tyrosine Hydroxylase. The exact sequence is proprietary.
Purification	Purified by antigen-affinity chromatography.
Conjugation	Unconjugated

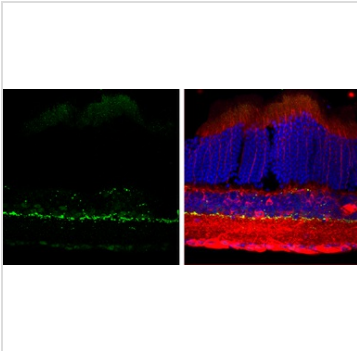


For full product information, images and publications, please visit our [website](#).

For laboratory research use only. Not for any clinical, therapeutic, or diagnostic use in humans or animals. Not for animal or human consumption.

Note

Purchasers shall not, and agree not to enable third parties to, analyze, copy, reverse engineer or otherwise attempt to determine the structure or sequence of the product.

DATA IMAGES

GTx113016 IHC-Fr Image

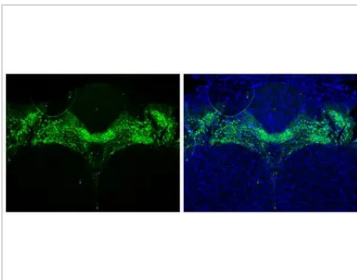
Tyrosine Hydroxylase antibody detects Tyrosine Hydroxylase protein by immunohistochemical analysis.

Sample: Frozen sectioned adult mouse retina.

Green: Tyrosine Hydroxylase protein stained by Tyrosine Hydroxylase antibody (GTx113016) diluted at 1:250.

Red: beta Tubulin 3/ TUJ1, stained by beta Tubulin 3/ TUJ1 antibody [GT11710] (GTx631836) diluted at 1:250.

Blue: Fluoroshield with DAPI (GTx30920).


GTx113016 IHC-P Image

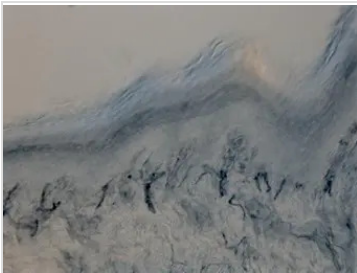
Tyrosine Hydroxylase antibody detects Tyrosine Hydroxylase protein in midbrain dopaminergic neurons by immunohistochemical analysis.

Sample: Paraffin-embedded mouse brain.

Green: Tyrosine Hydroxylase stained by Tyrosine Hydroxylase antibody (GTx113016) diluted at 1:1000.

Blue: Fluoroshield with DAPI (GTx30920).

Antigen Retrieval: Citrate buffer, pH 6.0, 15 min


GTx113016 IHC-Fr Image

Immunohistochemical analysis of Rat hindlimb pad skin tissue (paraformaldehyde-fixed frozen sections), using Tyrosine Hydroxylase(GTx113016) antibody at 1:100 dilution.

Antigen Retrieval: Citrate buffer, pH 6.0, 15 min


GTx113016 IHC-Fr Image

Immunohistochemical analysis of Rat hindlimb pad skin tissue (paraformaldehyde-fixed frozen sections), using Tyrosine Hydroxylase(GTx113016) antibody at 1:100 dilution.

Antigen Retrieval: Citrate buffer, pH 6.0, 15 min



For full product information, images and publications, please visit our [website](https://www.genetex.com).