

Cardiac Troponin I antibody [N1C3-3]

Cat. No. GTX113028

Host	Rabbit
Clonality	Polyclonal
Isotype	IgG
Applications	WB, ICC/IF, IHC
Reactivity	Human, Mouse, Pig

References (3)

Package

100 µl, 25 µl

Applications

Application Note

*Optimal dilutions/concentrations should be determined by the researcher.

Suggested dilution	Recommended dilution
WB	1:1000-1:10000
ICC/IF	1:100-1:1000
IHC	Assay dependent

Not tested in other applications.

Calculated MW 24 kDa. ([Note](#))

Properties

Form	Liquid
Buffer	0.1M Tris, 0.1M Glycine, 20% Glycerol
Preservative	0.01% Thimerosal
Storage	Store as concentrated solution. Centrifuge briefly prior to opening vial. For short-term storage (1-2 weeks), store at 4°C. For long-term storage, aliquot and store at -20°C or below. Avoid multiple freeze-thaw cycles.
Concentration	0.95 mg/ml (Please refer to the vial label for the specific concentration.)
Immunogen	Recombinant protein encompassing a sequence within the center region of human Cardiac Troponin I. The exact sequence is proprietary.
Purification	Purified by antigen-affinity chromatography.
Conjugation	Unconjugated

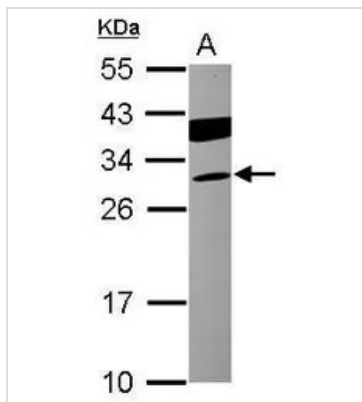
Note

For laboratory research use only. Not for any clinical, therapeutic, or diagnostic use in humans or animals. Not for animal or human consumption.

Purchasers shall not, and agree not to enable third parties to, analyze, copy, reverse engineer or otherwise attempt to determine the structure or sequence of the product.

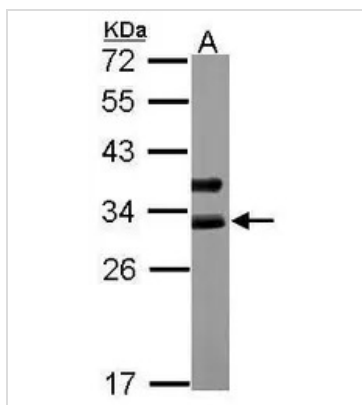
For full product information, images and publications, please visit our [website](#).

DATA IMAGES



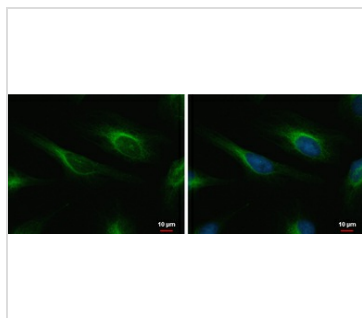
GTX113028 WB Image

Sample (30 ug of whole cell lysate)
 A: Raji
 12% SDS PAGE
 GTX113028 diluted at 1:1000



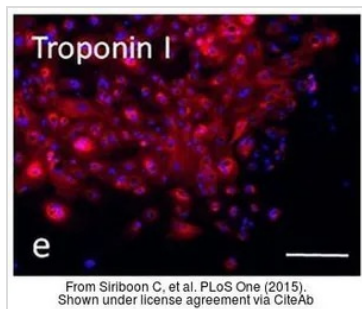
GTX113028 WB Image

Sample (50 ug of whole cell lysate)
 A: mouse heart
 12% SDS PAGE
 GTX113028 diluted at 1:5000



GTX113028 ICC/IF Image

Cardiac Troponin I antibody [N1C3-3] detects Cardiac Troponin I protein at cytoplasm by immunofluorescent analysis.
 Sample: HeLa cells were fixed in 4% paraformaldehyde at RT for 15 min.
 Green: Cardiac Troponin I protein stained by Cardiac Troponin I antibody [N1C3-3] (GTX113028) diluted at 1:500.
 Blue: Hoechst 33342 staining.



GTX113028 ICC/IF Image

The data was published in the journal PLoS One in 2015. [PMID: 25680105](https://pubmed.ncbi.nlm.nih.gov/25680105/)



For full product information, images and publications, please visit our [website](http://www.genetex.com).