

Chk2 antibody

Cat. No. GTX113055

Host	Rabbit
Clonality	Polyclonal
Isotype	IgG
Application	WB, ICC/IF
Reactivity	Human

Reference (2)
 Package
 100 µl, 25 µl

APPLICATION

Application Note

*Optimal dilutions/concentrations should be determined by the researcher.

Suggested dilution	Recommended dilution
WB	1:500-1:3000
ICC/IF	1:100-1:1000

Not tested in other applications.

Calculated MW 61 kDa. ([Note](#))

PROPERTIES

Form	Liquid
Buffer	0.1M Tris, 0.1M Glycine, 20% Glycerol
Preservative	0.01% Thimerosal
Storage	Store as concentrated solution. Centrifuge briefly prior to opening vial. For short-term storage (1-2 weeks), store at 4°C. For long-term storage, aliquot and store at -20°C or below. Avoid multiple freeze-thaw cycles.
Concentration	1 mg/ml (Please refer to the vial label for the specific concentration.)
Immunogen	Recombinant protein encompassing a sequence within the center region of human Chk2. The exact sequence is proprietary.
Purification	Purified by antigen-affinity chromatography.
Conjugation	Unconjugated

Note

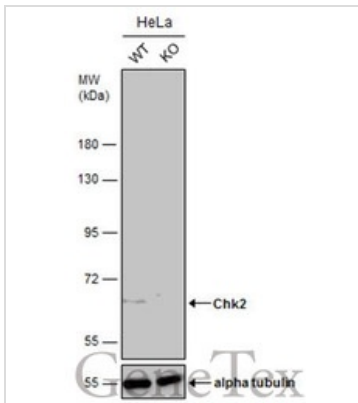
For laboratory research use only. Not for any clinical, therapeutic, or diagnostic use in humans or animals. Not for animal or human consumption.

Purchasers shall not, and agree not to enable third parties to, analyze, copy, reverse engineer or otherwise attempt to determine the structure or sequence of the product.



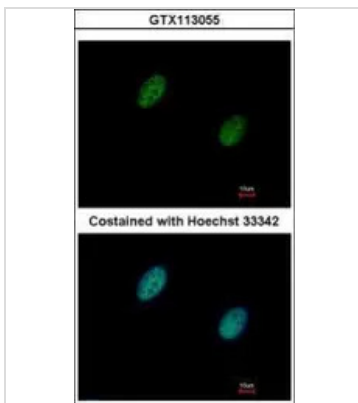
For full product information, images and publications, please visit our [website](#).

DATA IMAGES



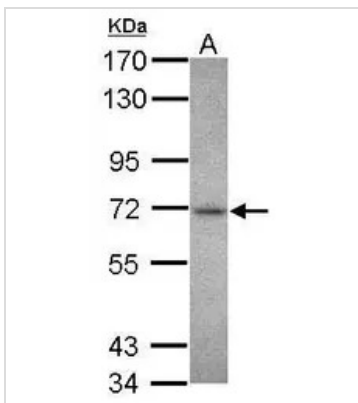
GTKX113055 WB Image

Wild-type (WT) and Chk2 knockout (KO) HeLa cell extracts (30 µg) were separated by 7.5% SDS-PAGE, and the membrane was blotted with Chk2 antibody (GTKX113055) diluted at 1:500. The HRP-conjugated anti-rabbit IgG antibody (GTK213110-01) was used to detect the primary antibody, and the signal was developed with Trident ECL plus-Enhanced.



GTKX113055 ICC/IF Image

Immunofluorescence analysis of paraformaldehyde-fixed HeLa, using Chk2 (GTKX113055) antibody at 1:500 dilution.



GTKX113055 WB Image

Sample (30 ug of whole cell lysate)
A: Jurkat
7.5% SDS PAGE
GTKX113055 diluted at 1:1000



For full product information, images and publications, please visit our [website](https://www.genetex.com).