

LRRK2 antibody [N3], Internal

Cat. No. GTX113067

Host	Rabbit
Clonality	Polyclonal
Isotype	IgG
Application	WB, ICC/IF, IHC-P
Reactivity	Human, Mouse

Package
100 µl, 25 µl

APPLICATION

Application Note

*Optimal dilutions/concentrations should be determined by the researcher.

Suggested dilution	Recommended dilution
WB	1:500-1:3000
ICC/IF	1:100-1:1000
IHC-P	1:100-1:1000

Not tested in other applications.

Calculated MW 286 kDa. ([Note](#))

PROPERTIES

Form	Liquid
Buffer	0.1M Tris, 0.1M Glycine, 20% Glycerol
Preservative	0.01% Thimerosal
Storage	Store as concentrated solution. Centrifuge briefly prior to opening vial. For short-term storage (1-2 weeks), store at 4°C. For long-term storage, aliquot and store at -20°C or below. Avoid multiple freeze-thaw cycles.
Concentration	1 mg/ml (Please refer to the vial label for the specific concentration.)
Immunogen	Recombinant protein encompassing a sequence within the center region of human LRRK2. The exact sequence is proprietary.
Purification	Purified by antigen-affinity chromatography.
Conjugation	Unconjugated

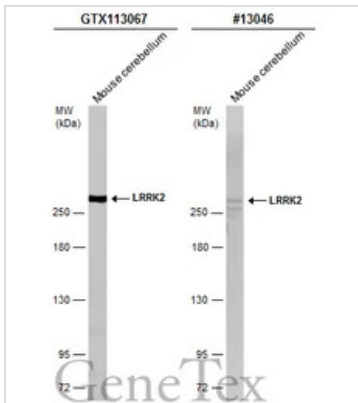
Note For laboratory research use only. Not for any clinical, therapeutic, or diagnostic use in humans or animals. Not for animal or human consumption.

Purchasers shall not, and agree not to enable third parties to, analyze, copy, reverse engineer or otherwise attempt to determine the structure or sequence of the product.



For full product information, images and publications, please visit our [website](#).

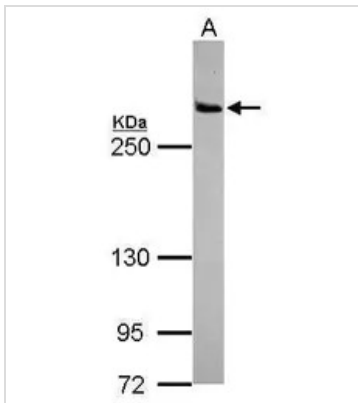
DATA IMAGES



GTX113067 WB Image

Mouse tissue extract (50 µg) was separated by 5% SDS-PAGE, and the membranes were blotted with LRRK2 antibody [N3], Internal (GTX113067) diluted at 1:500 and competitor's antibody (#13046) diluted at 1:500. The HRP-conjugated anti-rabbit IgG antibody (GTX213110-01) was used to detect the primary antibody.

*The competitor is not affiliated with GeneTex and does not endorse this product.



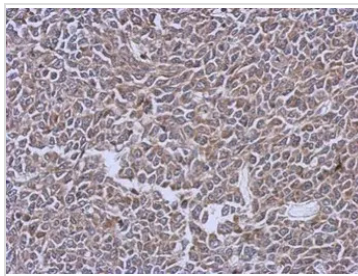
GTX113067 WB Image

Sample (30 ug of whole cell lysate)

A: IMR32

5% SDS PAGE

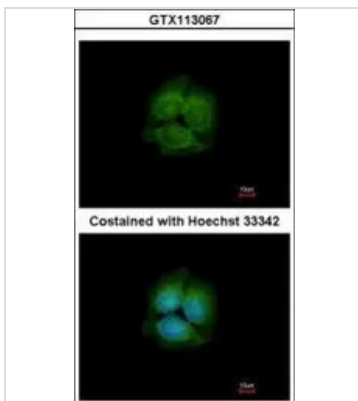
GTX113067 diluted at 1:1000



GTX113067 IHC-P Image

Immunohistochemical analysis of paraffin-embedded BT483 xenograft, using LRRK2(GTX113067) antibody at 1:500 dilution.

Antigen Retrieval: Trilogy™ (EDTA based, pH 8.0) buffer, 15min



GTX113067 ICC/IF Image

Immunofluorescence analysis of methanol-fixed MCF-7, using LRRK2(GTX113067) antibody at 1:500 dilution.



For full product information, images and publications, please visit our [website](https://www.genetex.com).