

beta Tubulin antibody [D66]

Cat. No. GTX11307

| | |
|---------------------|---|
| Host | Mouse |
| Clonality | Monoclonal |
| Isotype | IgG1 |
| Applications | WB, ICC/IF, IP, ELISA |
| Reactivity | Human, Mouse, Rat, Rabbit, Bovine, Dog, Hamster, Chicken, Monkey, Chlamydomonas reinhardtii, Dinoflagellate, Sea Urchin |

References (4)

Package

100 µl

Applications

Application Note

*Optimal dilutions/concentrations should be determined by the researcher.

| Suggested dilution | Recommended dilution |
|--------------------|----------------------|
| WB | 0.5-1.0 µg/ml |
| ICC/IF | Assay dependent |
| IP | Assay dependent |
| ELISA | Assay dependent |

Not tested in other applications.

| | |
|----------------------|--|
| Calculated MW | 50 kDa. (Note) |
| Product Note | Recognizes all mouse brain β -tubulin isoforms (β and β' subpopulations), and sea urchin β 2-tubulin. The epitope recognized by the antibody is localized in the C-terminal region of β -tubulin (amino acids 427-432 in sea urchin β 2-tubulin). |

Properties

| | |
|----------------------|--|
| Form | Liquid |
| Buffer | PBS, 1% BSA |
| Preservative | 15mM Sodium azide |
| Storage | Store as concentrated solution. Centrifuge briefly prior to opening vial. For short-term storage (1-2 weeks), store at 4°C. For long-term storage, aliquot and store at -20°C or below. Avoid multiple freeze-thaw cycles. |
| Concentration | ~1? mg/ml (Please refer to the vial label for the specific concentration.) |
| Immunogen | sea urchin (Lytechinus pictus) sperm axonemal proteins. |
| Purification | Purified immunoglobulin |
| Conjugation | Unconjugated |



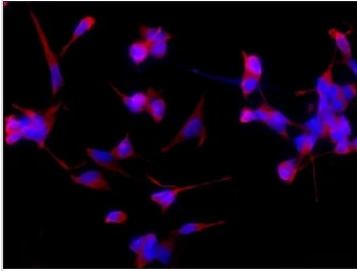
For full product information, images and publications, please visit our [website](#).

For laboratory research use only. Not for any clinical, therapeutic, or diagnostic use in humans or animals. Not for animal or human consumption.

Note

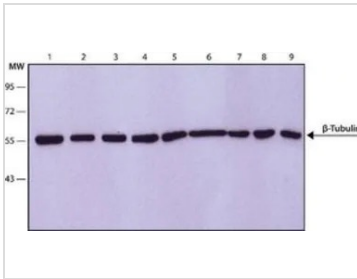
Purchasers shall not, and agree not to enable third parties to, analyze, copy, reverse engineer or otherwise attempt to determine the structure or sequence of the product.

DATA IMAGES



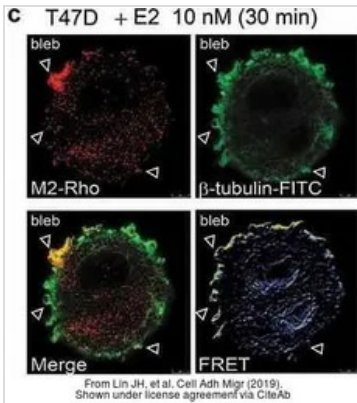
GTX11307 ICC/IF Image

ICC/IF analysis of SH-SY-5Y cells using GTX11307 beta Tubulin antibody [D66] at 0.5 µg/mL (red) with DAPI (blue). Cells were fixed and permeabilized with methanol followed by methanol:acetone.



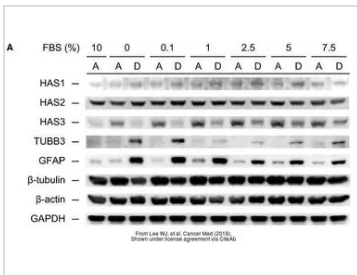
GTX11307 WB Image

WB analysis of (1) HeLa, (2) U87, (3) P19, (4) Neuro-2a, (5) PC-12, (6) COS-7, (7) CHO, (8) MDBK and (9) MDCK lysates using beta Tubulin antibody [D66] at 1 µg/ml.



GTX11307 ICC/IF Image

The data was published in the journal Cell Adh Migr in 2019. [PMID: 30744493](https://pubmed.ncbi.nlm.nih.gov/30744493/)



GTX11307 WB Image

The data was published in the journal Cancer Med in 2019. [PMID: 31274246](https://pubmed.ncbi.nlm.nih.gov/31274246/)



For full product information, images and publications, please visit our [website](https://www.genetex.com).