

EpCAM antibody [N3C3]

Cat. No. GTX113091

| | |
|--------------|-------------------|
| Host | Rabbit |
| Clonality | Polyclonal |
| Isotype | IgG |
| Applications | WB, ICC/IF, IHC-P |
| Reactivity | Human, Mouse |

References (5)

Package

100 µl, 25 µl

Applications

Application Note

*Optimal dilutions/concentrations should be determined by the researcher.

| Suggested dilution | Recommended dilution |
|--------------------|----------------------|
| WB | 1:500-1:10000 |
| ICC/IF | Assay dependent |
| IHC-P | 1:100-1:1000 |

Not tested in other applications.

Calculated MW 35 kDa. ([Note](#))

Properties

| | |
|---------------|--|
| Form | Liquid |
| Buffer | PBS, 20% Glycerol |
| Preservative | 0.025% ProClin 300 |
| Storage | Store as concentrated solution. Centrifuge briefly prior to opening vial. For short-term storage (1-2 weeks), store at 4°C. For long-term storage, aliquot and store at -20°C or below. Avoid multiple freeze-thaw cycles. |
| Concentration | 1.3 mg/ml (Please refer to the vial label for the specific concentration.) |
| Immunogen | Recombinant protein encompassing a sequence within the center region of human EpCAM. The exact sequence is proprietary. |
| Purification | Purified by antigen-affinity chromatography. |
| Conjugation | Unconjugated |

Note

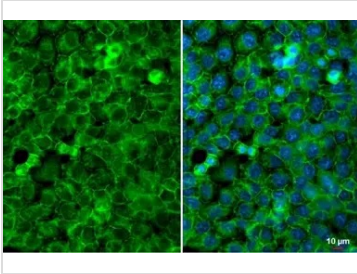
For laboratory research use only. Not for any clinical, therapeutic, or diagnostic use in humans or animals. Not for animal or human consumption.

Purchasers shall not, and agree not to enable third parties to, analyze, copy, reverse engineer or otherwise attempt to determine the structure or sequence of the product.



For full product information, images and publications, please visit our [website](#).

DATA IMAGES



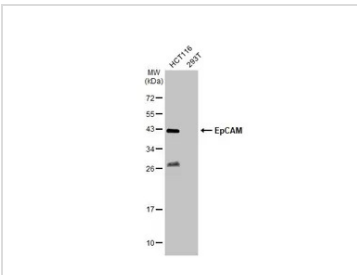
GTX113091 ICC/IF Image

EpCAM antibody [N3C3] detects EpCAM protein at cell membrane and cell junction by immunofluorescent analysis.

Sample: HCT116 cells were fixed in ice-cold MeOH for 5 min.

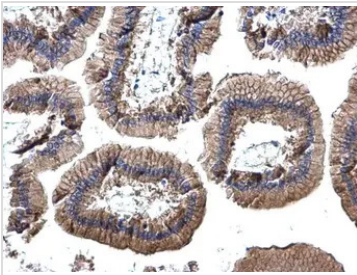
Green: EpCAM stained by EpCAM antibody [N3C3] (GTX113091) diluted at 1:500.

Blue: Fluoroshield with DAPI (GTX30920).



GTX113091 WB Image

Various whole cell extracts (30 µg) were separated by 12% SDS-PAGE, and the membrane was blotted with EpCAM antibody [N3C3] (GTX113091) diluted at 1:5000. The HRP-conjugated anti-rabbit IgG antibody (GTX213110-01) was used to detect the primary antibody.



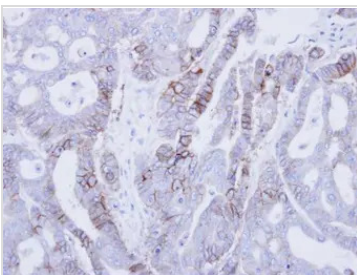
GTX113091 IHC-P Image

EpCAM antibody [N3C3] detects EpCAM protein at cell membrane by immunohistochemical analysis.

Sample: Paraffin-embedded mouse duodenum.

EpCAM stained by EpCAM antibody [N3C3] (GTX113091) diluted at 1:500.

Antigen Retrieval: Trilogy™ (EDTA based, pH 8.0) buffer, 15min



GTX113091 IHC-P Image

Immunohistochemical analysis of paraffin-embedded NCIN87 xenograft , using Ep-CAM (GTX113091) antibody at 1:500 dilution.

Antigen Retrieval: Trilogy™ (EDTA based, pH 8.0) buffer, 15min



For full product information, images and publications, please visit our [website](https://www.genetex.com).