

beta Tubulin antibody [2-28-33]

Cat. No. GTX11311

Host	Mouse
Clonality	Monoclonal
Isotype	IgG1
Applications	WB, ICC/IF
Reactivity	Human, Rat, Bovine, Chicken, Caenorhabditis elegans, Ciona intestinalis, Strongylocentrotus purpuratus

Package
200 µl

Applications

Application Note

*Optimal dilutions/concentrations should be determined by the researcher.

Suggested dilution	Recommended dilution
WB	1:100
ICC/IF	1:1,000

Not tested in other applications.

Calculated MW 50 kDa. ([Note](#))

Product Note

The antibody recognizes the two major and one of the minor β -tubulin isotypes of the free-living soil nematode *C. elegans*. It also binds to Sarkosyl-resistant ribbons from *Strongylocentrotus purpuratus* sperm axonemes, to neuronal axons of the larva of an ascidian (*Ciona intestinalis*) and to tubulin of chicken and mammals, cultured human fibroblasts, bovine and rat brain tissue. In *C.elegans* preparations, the antibody does not recognize tubulin that has been heat denatured in the presence of SDS and β -mercaptoethanol, though it is bound to tubulin separated on isoelectric focusing gels. It reacts with heat-denatured and reduced mammalian preparations in immunoblotting.

Properties

Form	Liquid
Buffer	Ascites
Preservative	15mM Sodium azide
Storage	Store as concentrated solution. Centrifuge briefly prior to opening vial. For short-term storage (1-2 weeks), store at 4°C. For long-term storage, aliquot and store at -20°C or below. Avoid multiple freeze-thaw cycles.
Immunogen	sarkosyl-resistant ribbons from <i>Strongylocentrotus purpuratus</i> (sea urchin) sperm axonemes.
Purification	Unpurified
Conjugation	Unconjugated



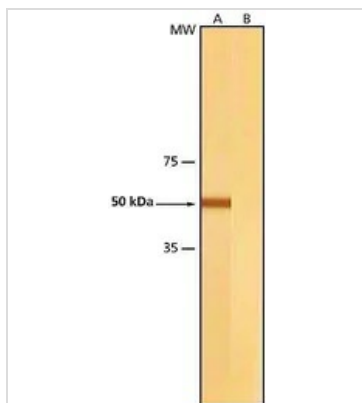
For full product information, images and publications, please visit our [website](#).

For laboratory research use only. Not for any clinical, therapeutic, or diagnostic use in humans or animals. Not for animal or human consumption.

Note

Purchasers shall not, and agree not to enable third parties to, analyze, copy, reverse engineer or otherwise attempt to determine the structure or sequence of the product.

DATA IMAGES



GTX11311 WB Image

WB analysis of chicken fibroblasts extract using GTX11311 beta Tubulin antibody [2-28-33].

Lane A : Antibody dilution 1:200

Lane B : Negative control (only secondary antibody)



For full product information, images and publications, please visit our [website](https://www.genetex.com).