

alpha Adducin antibody [N1N2], N-term

Cat. No. GTX113118

Host	Rabbit
Clonality	Polyclonal
Isotype	IgG
Applications	WB, IHC-P, IHC-Wm
Reactivity	Human, Mouse, Zebrafish

Package
100 µl, 25 µl

Applications

Application Note

*Optimal dilutions/concentrations should be determined by the researcher.

Suggested dilution	Recommended dilution
WB	1:500-1:3000
IHC-P	1:100-1:1000
IHC-Wm	Assay dependent

Not tested in other applications.

Calculated MW 81 kDa. ([Note](#))

Properties

Form	Liquid
Buffer	0.1M Tris, 0.1M Glycine, 10% Glycerol
Preservative	0.01% Thimerosal
Storage	Store as concentrated solution. Centrifuge briefly prior to opening vial. For short-term storage (1-2 weeks), store at 4°C. For long-term storage, aliquot and store at -20°C or below. Avoid multiple freeze-thaw cycles.
Concentration	0.96 mg/ml (Please refer to the vial label for the specific concentration.)
Immunogen	Recombinant protein encompassing a sequence within the center region of human alpha Adducin. The exact sequence is proprietary.
Purification	Purified by antigen-affinity chromatography.
Conjugation	Unconjugated

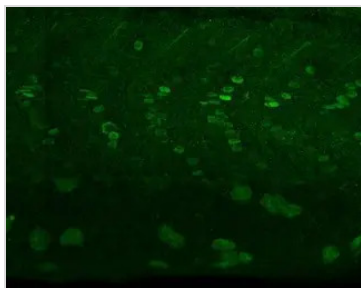
Note For laboratory research use only. Not for any clinical, therapeutic, or diagnostic use in humans or animals. Not for animal or human consumption.

Purchasers shall not, and agree not to enable third parties to, analyze, copy, reverse engineer or otherwise attempt to determine the structure or sequence of the product.



For full product information, images and publications, please visit our [website](#).

DATA IMAGES

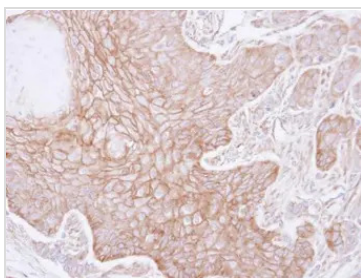


GTX113118 IHC-Wm Image

alpha Adducin antibody [N1N2], N-term detects alpha Adducin protein at nucleus on whole-mount zebrafish embryos by immunohistochemical analysis.

Sample: Paraformaldehyde-fixed zebrafish embryos.

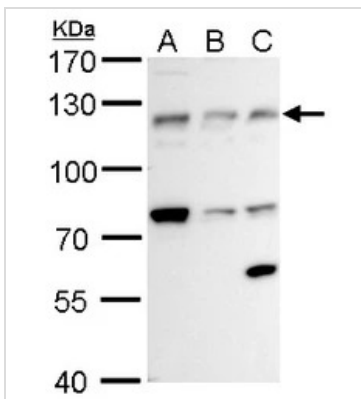
alpha Adducin antibody [N1N2], N-term (GTX113118) dilution: 1:200.



GTX113118 IHC-P Image

Immunohistochemical analysis of paraffin-embedded SG xenograft , using Alpha-adducin(GTX113118) antibody at 1:100 dilution.

Antigen Retrieval: Citrate buffer, pH 6.0, 15 min



GTX113118 WB Image

alpha Adducin antibody [N1N2], N-term detects alpha Adducin protein by western blot analysis.

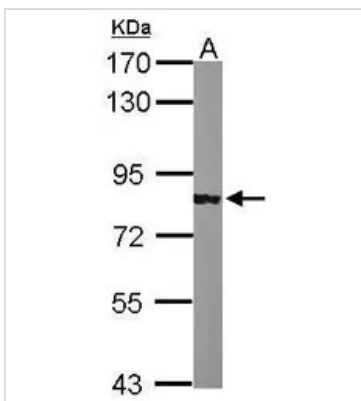
A. 30 µg Jurkat whole cell lysate/extract

B. 30 µg Raji whole cell lysate/extract

C. 30 µg NCI-H929 whole cell lysate/extract

7.5 % SDS-PAGE

alpha Adducin antibody [N1N2], N-term (GTX113118) dilution: 1:1000



GTX113118 WB Image

Sample (50 ug of whole cell lysate)

A: mouse liver

7.5% SDS PAGE

GTX113118 diluted at 1:1000



For full product information, images and publications, please visit our [website](http://www.genetex.com).