

beta Tubulin I antibody [SAP.4G5]

Cat. No. GTX11312

Host	Mouse
Clonality	Monoclonal
Isotype	IgG1
Applications	WB, ICC/IF, IHC-P, IP, ELISA
Reactivity	Human, Mouse, Rat, Bovine, Dog, Hamster, Chicken, Xenopus

References (2)

Package

100 µl

Applications

Application Note

*Optimal dilutions/concentrations should be determined by the researcher.

Suggested dilution	Recommended dilution
WB	1:20,000
ICC/IF	Assay dependent
IHC-P	Assay dependent
IP	Assay dependent
ELISA	Assay dependent

Note : using methanol/acetone-fixed chicken fibroblasts

Not tested in other applications.

Calculated MW	50 kDa. (Note)
Product Note	Recognizes an epitope located in the C-terminal sequence of β -tubulin isotype I. No reactivity with other tubulin isotypes is observed.

Properties

Form	Liquid
Buffer	Ascites
Preservative	15mM Sodium azide
Storage	Store as concentrated solution. Centrifuge briefly prior to opening vial. For short-term storage (1-2 weeks), store at 4°C. For long-term storage, aliquot and store at -20°C or below. Avoid multiple freeze-thaw cycles.
Immunogen	synthetic peptide corresponding to the C-terminal sequence of β -tubulin isotype I, conjugated to BSA.
Purification	Unpurified
Conjugation	Unconjugated



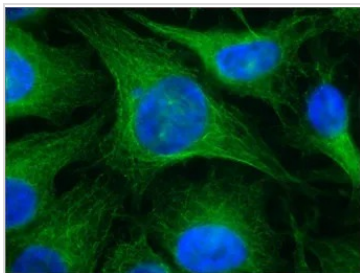
For full product information, images and publications, please visit our [website](#).

For laboratory research use only. Not for any clinical, therapeutic, or diagnostic use in humans or animals. Not for animal or human consumption.

Note

Purchasers shall not, and agree not to enable third parties to, analyze, copy, reverse engineer or otherwise attempt to determine the structure or sequence of the product.

DATA IMAGES



GTX11312 ICC/IF Image

ICC/IF analysis of HeLa cells using GTX11312 beta Tubulin I antibody [SAP.4G5] at 1:5000 (green) with DAPI(blue).Cells were fixed and permeabilized with 4% PFA followed by 0.5% Triton X-100.



GTX11312 WB Image

WB analysis of (1) chicken fibroblasts (2) mouse brain extract I (3) mouse brain extract II (4) rat brain (5) Jurkat (6) Daudi (7) SK-Mel-28 (8) G361 (9) HeLa using GTX11312 beta Tubulin I antibody [SAP.4G5] at 1:20000.



For full product information, images and publications, please visit our [website](https://www.genetex.com).