

beta Tubulin 3/ Tuj1 antibody [SDL.3D10]

Cat. No. GTX11314

Host	Mouse
Clonality	Monoclonal
Isotype	IgG2b
Applications	WB, ICC/IF, ELISA
Reactivity	Human, Rat, Bovine, Pig

Package
100 µl

Applications

Application Note

*Optimal dilutions/concentrations should be determined by the researcher.

Suggested dilution	Recommended dilution
WB	1:400
ICC/IF	Assay dependent
ELISA	Assay dependent

Note : using MDCK cells fixed in methanol

Not tested in other applications.

Calculated MW	50 kDa. (Note)
Product Note	The antibody specifically recognizes an epitope located on isotype III of β -tubulin. No cross-reactivity with other tubulin isotypes is observed. The antibody can stimulate microtubule assembly when reconstituted with tubulin and either tau or MAP2.

Properties

Form	Liquid
Buffer	Ascites
Preservative	No preservatives
Storage	Store as concentrated solution. Centrifuge briefly prior to opening vial. For short-term storage (1-2 weeks), store at 4°C. For long-term storage, aliquot and store at -20°C or below. Avoid multiple freeze-thaw cycles.
Immunogen	synthetic peptide corresponding to the C-terminal sequence of human β -tubulin isotype III coupled to BSA
Purification	Unpurified
Conjugation	Unconjugated



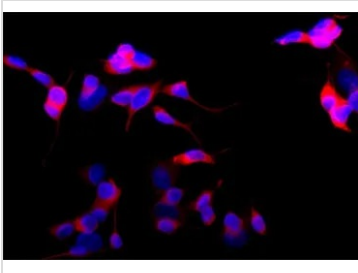
For full product information, images and publications, please visit our [website](#).

For laboratory research use only. Not for any clinical, therapeutic, or diagnostic use in humans or animals. Not for animal or human consumption.

Note

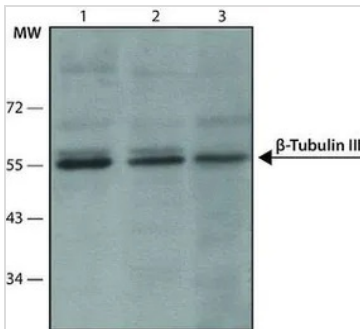
Purchasers shall not, and agree not to enable third parties to, analyze, copy, reverse engineer or otherwise attempt to determine the structure or sequence of the product.

DATA IMAGES



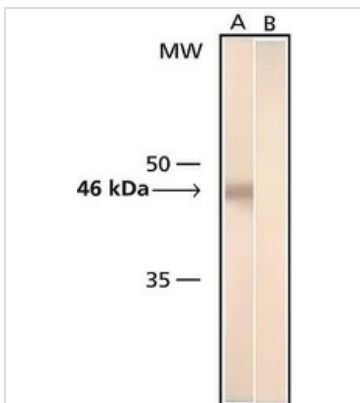
GTX11314 ICC/IF Image

ICC/IF analysis of SH-SY-5Y cells using GTX11314 beta Tubulin 3/ Tuj1 antibody [SDL3D10] at 1:400 (pink) with DAPI (blue). Cells were fixed and permeabilized with methanol followed by methanol:acetone.



GTX11314 WB Image

WB analysis of (1)U87 (2) MDBK (3) rat2 cell lysate using GTX11314 beta Tubulin 3/ Tuj1 antibody [SDL3D10] at 1:400 .



GTX11314 WB Image

WB analysis of rat brain cytosol extract using GTX11314 beta Tubulin 3/ Tuj1 antibody [SDL3D10].

Lane A : Antibody dilution 1:400

Lane B : Negative control (only secondary antibody)



For full product information, images and publications, please visit our [website](https://www.genetex.com).