

## Caspase 10 antibody

Cat. No. GTX113148

|              |                   |
|--------------|-------------------|
| Host         | Rabbit            |
| Clonality    | Polyclonal        |
| Isotype      | IgG               |
| Applications | WB, ICC/IF, IHC-P |
| Reactivity   | Human             |

References ( 1 )

Package

100 µl, 25 µl

## Applications

## Application Note

\*Optimal dilutions/concentrations should be determined by the researcher.

| Suggested dilution | Recommended dilution |
|--------------------|----------------------|
| WB                 | 1:500-1:3000         |
| ICC/IF             | 1:100-1:1000         |
| IHC-P              | 1:100-1:1000         |

Not tested in other applications.

Calculated MW 59 kDa. ( [Note](#) )

## Properties

|               |  |
|---------------|--|
| Form          | Liquid   |
| Buffer        | 0.1M Tris, 0.1M Glycine, 20% Glycerol  |
| Preservative  | 0.01% Thimerosal   |
| Storage       | Store as concentrated solution. Centrifuge briefly prior to opening vial. For short-term storage (1-2 weeks), store at 4°C. For long-term storage, aliquot and store at -20°C or below. Avoid multiple freeze-thaw cycles. |
| Concentration | 1 mg/ml (Please refer to the vial label for the specific concentration.)   |
| Immunogen     | Recombinant protein encompassing a sequence within the center region of human Caspase 10. The exact sequence is proprietary.   |
| Purification  | Purified by antigen-affinity chromatography.   |
| Conjugation   | Unconjugated   |

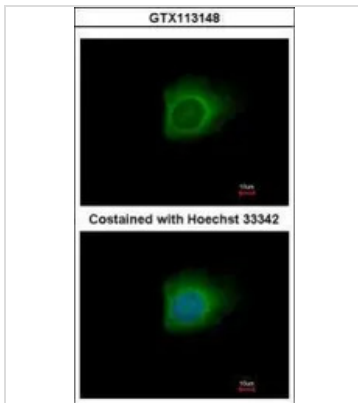
## Note

For laboratory research use only. Not for any clinical, therapeutic, or diagnostic use in humans or animals. Not for animal or human consumption.

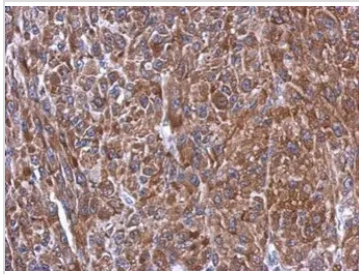
Purchasers shall not, and agree not to enable third parties to, analyze, copy, reverse engineer or otherwise attempt to determine the structure or sequence of the product.



For full product information, images and publications, please visit our [website](#).

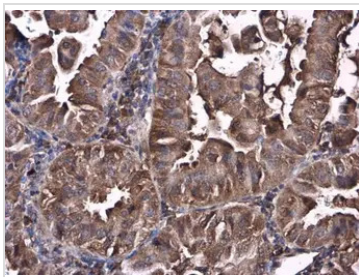
**DATA IMAGES**

**GTXT113148 ICC/IF Image**

Immunofluorescence analysis of methanol-fixed HeLa, using Caspase 10(GTXT113148) antibody at 1:500 dilution.


**GTXT113148 IHC-P Image**

Immunohistochemical analysis of paraffin-embedded U87 xenograft, using Caspase 10(GTXT113148) antibody at 1:500 dilution.

Antigen Retrieval: Trilogy™ (EDTA based, pH 8.0) buffer, 15min

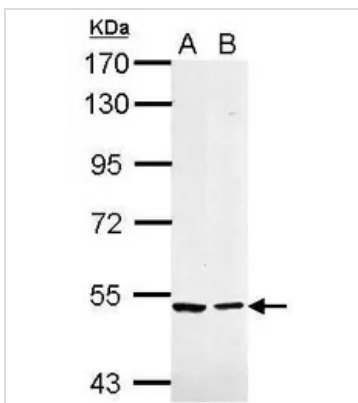

**GTXT113148 IHC-P Image**

Caspase 10 antibody detects Caspase 10 protein at cytoplasm in human lung cancer by immunohistochemical analysis.

Sample: Paraffin-embedded human lung cancer.

Caspase 10 antibody (GTXT113148) diluted at 1:500.

Antigen Retrieval: Citrate buffer, pH 6.0, 15 min


**GTXT113148 WB Image**

Sample (30 ug of whole cell lysate)

A: Jurkat

B: NCI-H929

7.5% SDS PAGE

GTXT113148 diluted at 1:1000



For full product information, images and publications, please visit our [website](http://www.genetex.com).