

gamma Tubulin antibody [GTU-88]

Cat. No. GTX11316

Host	Mouse
Clonality	Monoclonal
Isotype	IgG1
Application	WB, ICC/IF, ELISA
Reactivity	Human, Mouse, Rat, Drosophila, Dog, Hamster, Chicken, Monkey, Xenopus

Reference (5)
Package
100 µl

APPLICATION

Application Note

*Optimal dilutions/concentrations should be determined by the researcher.

Suggested dilution	Recommended dilution
WB	1:10,000
ICC/IF	1:5,000-1:10,000
ELISA	Assay dependent

Not tested in other applications.

Calculated MW	51 kDa. (Note)
Product Note	Monoclonal Anti-gamma-Tubulin recognizes an epitope located in the N-terminal amino acids 38-53 of gamma-tubulin (48 kDa). Cross reactivity has been observed with human, bovine, dog, hamster, rat, mouse, chicken, and Xenopus gamma-tubulin.

PROPERTIES

Form	Liquid
Buffer	Ascites
Preservative	15mM Sodium azide
Storage	Store as concentrated solution. Centrifuge briefly prior to opening vial. For short-term storage (1-2 weeks), store at 4°C. For long-term storage, aliquot and store at -20°C or below. Avoid multiple freeze-thaw cycles.
Immunogen	synthetic γ-tubulin peptide (amino acids 38-53), conjugated to KLH.
Purification	Unpurified
Conjugation	Unconjugated



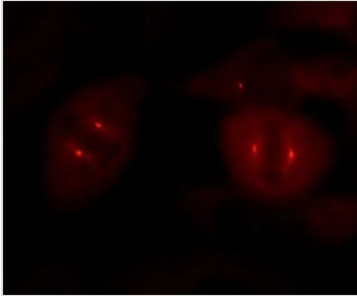
For full product information, images and publications, please visit our [website](#).

For laboratory research use only. Not for any clinical, therapeutic, or diagnostic use in humans or animals. Not for animal or human consumption.

Note

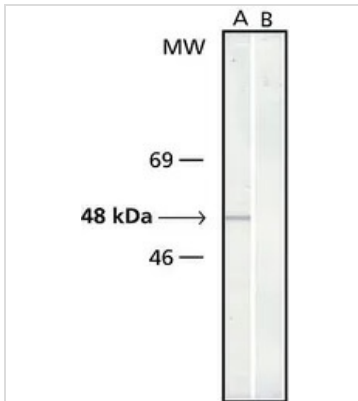
Purchasers shall not, and agree not to enable third parties to, analyze, copy, reverse engineer or otherwise attempt to determine the structure or sequence of the product.

DATA IMAGES



GTX11316 ICC/IF Image

ICC/IF analysis of HeLa cells using GTX11316 gamma Tubulin antibody [GTU-88] at 1:5,000. Cells were fixed and permeabilized with methanol followed by acetone.

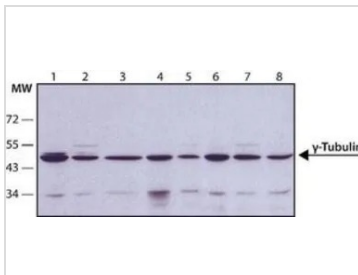


GTX11316 WB Image

WB analysis of chicken fibroblasts using GTX11316 gamma Tubulin antibody [GTU-88].

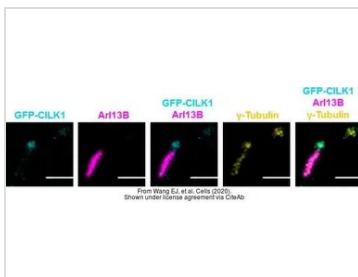
Lane A : Antibody dilution 1:20,000

Lane B : Negative control (secondary antibody only)



GTX11316 WB Image

WB analysis of (1) HeLa (2) U87 (3) COS7 (4) P19 (5) rat2 (6) CHO (7) MDBK (8) MDCK cell lysate using GTX11316 gamma Tubulin antibody [GTU-88] at 1:10,000.



GTX11316 ICC/IF Image

The data was published in the journal Cells in 2020. [PMID: 32178256](https://pubmed.ncbi.nlm.nih.gov/32178256/)



For full product information, images and publications, please visit our [website](https://www.genetex.com).