

gamma Tubulin antibody

Cat. No. GTX11317

Host	Rabbit
Clonality	Polyclonal
Isotype	IgG
Applications	WB, ICC/IF
Reactivity	Human, Mouse, Rat, Hamster, Chicken

Package
100 µl

Applications

Application Note

*Optimal dilutions/concentrations should be determined by the researcher.

Suggested dilution	Recommended dilution
WB	1:1,000
ICC/IF	1:5,000

Not tested in other applications.

Calculated MW	51 kDa. (Note)
Product Note	Anti-gamma-Tubulin recognizes an epitope located in the N-terminal region of gamma-tubulin (amino acids 38-53). Staining of gamma-tubulin (48 kDa) by immunoblotting is specifically inhibited with gamma-tubulin peptide (human, amino acids 38-53 with C-terminally added lysine).

Properties

Form	Liquid
Buffer	PBS
Preservative	15mM Sodium azide
Storage	Store as concentrated solution. Centrifuge briefly prior to opening vial. For short-term storage (1-2 weeks), store at 4°C. For long-term storage, aliquot and store at -20°C or below. Avoid multiple freeze-thaw cycles.
Concentration	Batch dependent (Please refer to the vial label for the specific concentration.)
Immunogen	synthetic peptide corresponding to the N-terminal region of human γ -tubulin (amino acids 38-53, with C-terminally added lysine) conjugated to KLH. This sequence is specific for γ -tubulin and not found in other members of the tubulin family such as α - β -, δ and ϵ - tubulins. This sequence is identical in mouse and rat γ -tubulin and highly conserved among species (Drosophila, Aspergillus, and yeast γ -tubulin).
Purification	IgG fraction
Conjugation	Unconjugated



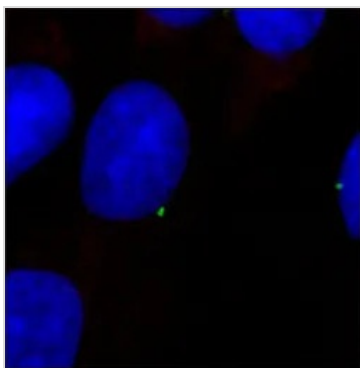
For full product information, images and publications, please visit our [website](#).

For laboratory research use only. Not for any clinical, therapeutic, or diagnostic use in humans or animals. Not for animal or human consumption.

Note

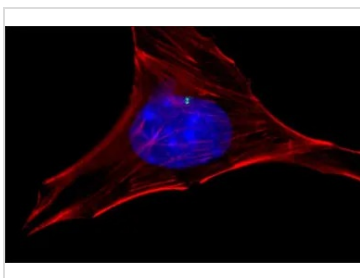
Purchasers shall not, and agree not to enable third parties to, analyze, copy, reverse engineer or otherwise attempt to determine the structure or sequence of the product.

DATA IMAGES



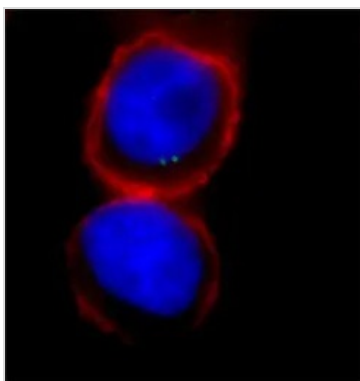
GTX11317 ICC/IF Image

ICC/IF analysis of Rat2 cells using GTX11317 gamma Tubulin antibody at 1:1500(green) with DAPI(blue).



GTX11317 ICC/IF Image

ICC/IF analysis of NIH3T3 cells using GTX11317 gamma Tubulin antibody at 1:500 (green).Actin staining with phalloidin rhodamine conjugate(red). Nuclear staining with DAPI(blue).



GTX11317 ICC/IF Image

ICC/IF analysis of HeLa cells using GTX11317 gamma Tubulin antibody at 1:500(green)..Actin staining with phalloidin rhodamine conjugate(red). Nuclear staining with DAPI(blue).



For full product information, images and publications, please visit our [website](#).