

Neutrophil elastase antibody [N2C3]

Cat. No. GTX113175

Host	Rabbit
Clonality	Polyclonal
Isotype	IgG
Applications	WB, IP
Reactivity	Human

References (2)

Package

100 µl, 25 µl

Applications

Application Note

*Optimal dilutions/concentrations should be determined by the researcher.

Suggested dilution	Recommended dilution
WB	1:500-1:3000
IP	1:100-1:500

Not tested in other applications.

Calculated MW 29 kDa. ([Note](#))

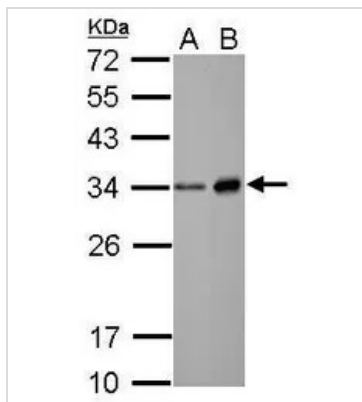
Properties

Form	Liquid
Buffer	PBS, 1% BSA, 20% Glycerol
Preservative	0.01% Thimerosal
Storage	Store as concentrated solution. Centrifuge briefly prior to opening vial. For short-term storage (1-2 weeks), store at 4°C. For long-term storage, aliquot and store at -20°C or below. Avoid multiple freeze-thaw cycles.
Concentration	1 mg/ml (Please refer to the vial label for the specific concentration.)
Immunogen	Recombinant protein encompassing a sequence within the center region of human Neutrophil elastase. The exact sequence is proprietary.
Purification	Purified by antigen-affinity chromatography.
Conjugation	Unconjugated
Note	For laboratory research use only. Not for any clinical, therapeutic, or diagnostic use in humans or animals. Not for animal or human consumption. Purchasers shall not, and agree not to enable third parties to, analyze, copy, reverse engineer or otherwise attempt to determine the structure or sequence of the product.



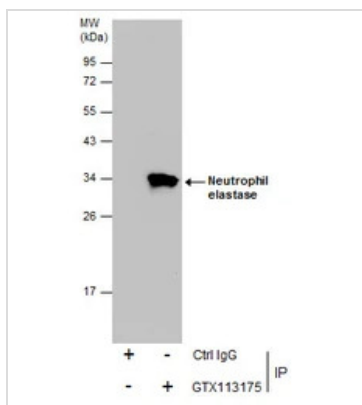
For full product information, images and publications, please visit our [website](#).

DATA IMAGES



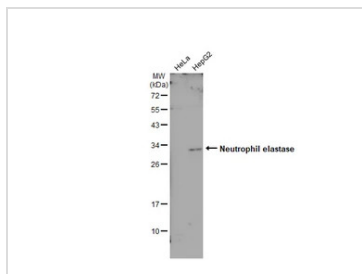
GTX113175 WB Image

Sample (30 ug of whole cell lysate)
 A: A549
 B: HepG2
 12% SDS PAGE
 GTX113175 diluted at 1:1000



GTX113175 IP Image

Immunoprecipitation of Neutrophil elastase protein from HepG2 whole cell extracts using 5 µg of Neutrophil elastase antibody [N2C3] Neutrop (GTX113175).
 Western blot analysis was performed using Neutrophil elastase antibody [N2C3] Neutrop (GTX113175).
 EasyBlot anti-Rabbit IgG (GTX221666-01) was used as a secondary reagent.



GTX113175 WB Image

Various whole cell extracts (30 µg) were separated by 12% SDS-PAGE, and the membrane was blotted with Neutrophil elastase antibody [N2C3] (GTX113175) diluted at 1:1000. The HRP-conjugated anti-rabbit IgG antibody (GTX213110-01) was used to detect the primary antibody.



For full product information, images and publications, please visit our [website](#).