

G6PD antibody [N2C1], Internal

Cat. No. GTX113186

Host	Rabbit
Clonality	Polyclonal
Isotype	IgG
Applications	WB, IHC-P, ELISA, Sandwich ELISA
Reactivity	Human

Package
100 µl, 25 µl

Applications

Application Note

*Optimal dilutions/concentrations should be determined by the researcher.

Suggested dilution	Recommended dilution
WB	1:500-1:3000
IHC-P	1:100-1:1000
ELISA	1:1000-1:10000
Sandwich ELISA	Assay dependent

Note : Capture: GTX113186 , Detection: GTX89057

Not tested in other applications.

Calculated MW 59 kDa. ([Note](#))

Properties

Form	Liquid
Buffer	0.1M Tris, 0.1M Glycine, 10% Glycerol
Preservative	0.01% Thimerosal
Storage	Store as concentrated solution. Centrifuge briefly prior to opening vial. For short-term storage (1-2 weeks), store at 4°C. For long-term storage, aliquot and store at -20°C or below. Avoid multiple freeze-thaw cycles.
Concentration	1.01 mg/ml (Please refer to the vial label for the specific concentration.)
Immunogen	Recombinant protein encompassing a sequence within the center region of human G6PD. The exact sequence is proprietary.
Purification	Purified by antigen-affinity chromatography.
Conjugation	Unconjugated



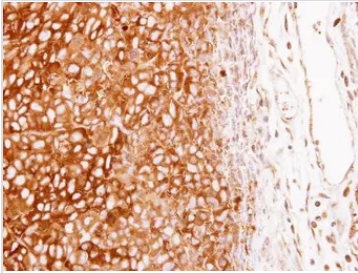
For full product information, images and publications, please visit our [website](#).

Date 2026 / 01 / 28 Page 1 of 2

For laboratory research use only. Not for any clinical, therapeutic, or diagnostic use in humans or animals. Not for animal or human consumption.

Note

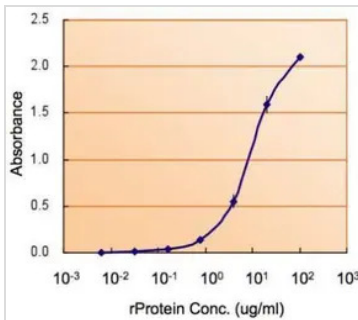
Purchasers shall not, and agree not to enable third parties to, analyze, copy, reverse engineer or otherwise attempt to determine the structure or sequence of the product.

DATA IMAGES

GTX113186 IHC-P Image

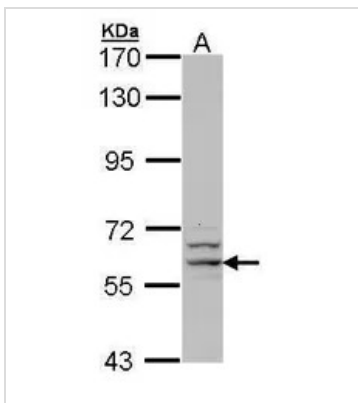
G6PD antibody [N2C1], Internal detects G6PD protein at cytosol on human lung carcinoma by immunohistochemical analysis.

Sample: G6PD antibody [N2C1], Internal (GTX113186) dilution: 1:250.

Antigen Retrieval: Trilogy™ (EDTA based, pH 8.0) buffer, 15min


GTX113186 ELISA Image

ELISA detection of G6PD using GTX113186 for capture at a concentration of 5 µg/mL and GTX89057 for detection at a concentration of 5 µg/mL.


GTX113186 WB Image

Sample (30 ug of whole cell lysate)

A: Molt-4 (GTX27912)

7.5% SDS PAGE

GTX113186 diluted at 1:1000



For full product information, images and publications, please visit our [website](https://www.genetex.com).