

## GPI antibody

Cat. No. GTX113203

Host	Rabbit
Clonality	Polyclonal
Isotype	IgG
Application	WB, ICC/IF, IHC-P, IHC-Fr
Reactivity	Human, Zebrafish

Reference ( 3 )  
Package  
100 µl, 25 µl

## APPLICATION

## Application Note

\*Optimal dilutions/concentrations should be determined by the researcher.

Suggested dilution	Recommended dilution
WB	1:500-1:3000
ICC/IF	1:100-1:1000
IHC-P	1:100-1:1000
IHC-Fr	Assay dependent

Not tested in other applications.

Calculated MW 63 kDa. ( [Note](#) )

## PROPERTIES

Form	Liquid
Buffer	0.1M Tris, 0.1M Glycine, 10% Glycerol
Preservative	0.01% Thimerosal
Storage	Store as concentrated solution. Centrifuge briefly prior to opening vial. For short-term storage (1-2 weeks), store at 4°C. For long-term storage, aliquot and store at -20°C or below. Avoid multiple freeze-thaw cycles.
Concentration	1 mg/ml (Please refer to the vial label for the specific concentration.)
Immunogen	Recombinant protein encompassing a sequence within the center region of human GPI. The exact sequence is proprietary.
Purification	Purified by antigen-affinity chromatography.
Conjugation	Unconjugated

## Note

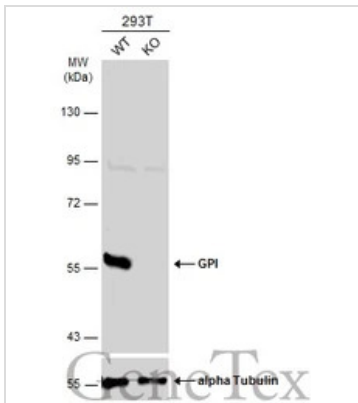
For laboratory research use only. Not for any clinical, therapeutic, or diagnostic use in humans or animals. Not for animal or human consumption.

Purchasers shall not, and agree not to enable third parties to, analyze, copy, reverse engineer or otherwise attempt to determine the structure or sequence of the product.



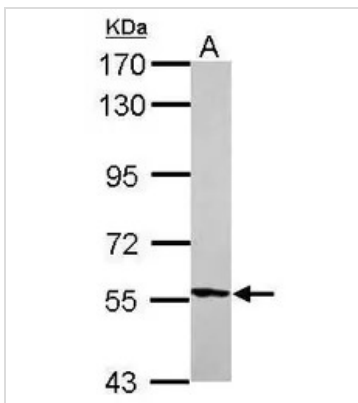
For full product information, images and publications, please visit our [website](#).

## DATA IMAGES



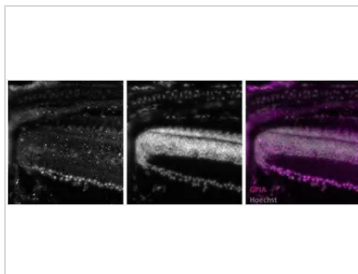
### GTXT113203 WB Image

Wild-type (WT) and GPI knockout (KO) 293T cell extracts (30 µg) were separated by 7.5% SDS-PAGE, and the membrane was blotted with GPI antibody (GTXT113203) diluted at 1:2000. The HRP-conjugated anti-rabbit IgG antibody (GTXT213110-01) was used to detect the primary antibody, and the signal was developed with Trident ECL plus-Enhanced.



### GTXT113203 WB Image

Sample (30 µg of whole cell lysate)  
A: zebrafish eye  
7.5% SDS PAGE  
GTXT113203 diluted at 1:1000



### GTXT113203 IHC-Fr Image

Immunohistochemical analysis of frozen sections of zebrafish retina, using GPI antibody (GTXT113203) at 1:2000 dilution.



### GTXT113203 IHC-P Image

Immunohistochemical analysis of paraffin-embedded zebrafish tissue, using GPI antibody (GTXT113203) at 1:300 dilution.



For full product information, images and publications, please visit our [website](https://www.genetex.com).