

gamma Tubulin antibody

Cat. No. GTX11321

Host	Rabbit
Clonality	Polyclonal
Isotype	IgG
Application	WB, ICC/IF
Reactivity	Human, Mouse, Rat, Dog, Frog

Reference (1)
Package
100 µl

APPLICATION

Application Note

*Optimal dilutions/concentrations should be determined by the researcher.

Suggested dilution	Recommended dilution
WB	1:5,000
ICC/IF	1:1,000

Not tested in other applications.

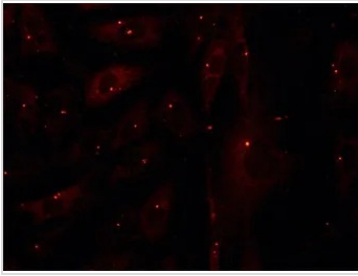
PROPERTIES

Form	Liquid
Buffer	PBS
Preservative	15mM Sodium azide
Storage	Store as concentrated solution. Centrifuge briefly prior to opening vial. For short-term storage (1-2 weeks), store at 4°C. For long-term storage, aliquot and store at -20°C or below. Avoid multiple freeze-thaw cycles.
Concentration	Batch dependent (Please refer to the vial label for the specific concentration.)
Immunogen	synthetic peptide corresponding to the C-terminus of Xenopus γ-tubulin (amino acids 437-451 with N-terminal added cys-gly), conjugated to KLH.
Purification	IgG fraction
Conjugation	Unconjugated
Note	For laboratory research use only. Not for any clinical, therapeutic, or diagnostic use in humans or animals. Not for animal or human consumption. Purchasers shall not, and agree not to enable third parties to, analyze, copy, reverse engineer or otherwise attempt to determine the structure or sequence of the product.



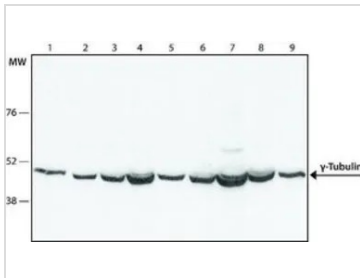
For full product information, images and publications, please visit our [website](#).

DATA IMAGES



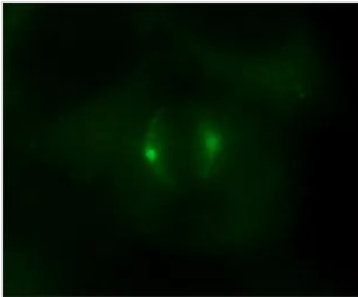
GTX11321 ICC/IF Image

ICC/IF analysis of Rat1 cells using GTX11321 gamma Tubulin antibody at 1:1,000. Cells were fixed and permeabilized with methanol followed by acetone.



GTX11321 WB Image

WB analysis of (1) HeLa (2) NIH-3T3 (3) MDCK (4) CHO (5) rat2 (6) A431 (7) JURKAT (8) U87 (9) C2C12 cells using GTX11321 gamma Tubulin antibody at 1:1,000.



GTX11321 ICC/IF Image

ICC/IF analysis of HeLa cells using GTX11321 gamma Tubulin antibody at 1:1,000. Cells were fixed and permeabilized with methanol followed by acetone.



For full product information, images and publications, please visit our [website](https://www.genetex.com).