

MYH9 antibody [N1-2], N-term

Cat. No. GTX113236

Host	Rabbit
Clonality	Polyclonal
Isotype	IgG
Applications	WB, ICC/IF, IHC-P, IHC-Fr, IP
Reactivity	Human, Mouse, Rat

References (10)

★★★★★ Review (1)

Package

100 µl, 25 µl

Applications

Application Note

*Optimal dilutions/concentrations should be determined by the researcher.

Suggested dilution	Recommended dilution
WB	1:500-1:3000
ICC/IF	1:100-1:1000
IHC-P	1:100-1:1000
IHC-Fr	Assay dependent
IP	1:100-1:500

Not tested in other applications.

Calculated MW 227 kDa. ([Note](#))

Properties

Form	Liquid
Buffer	PBS, 20% Glycerol
Preservative	0.025% ProClin 300
Storage	Store as concentrated solution. Centrifuge briefly prior to opening vial. For short-term storage (1-2 weeks), store at 4°C. For long-term storage, aliquot and store at -20°C or below. Avoid multiple freeze-thaw cycles.
Concentration	0.7 mg/ml (Please refer to the vial label for the specific concentration.)
Immunogen	Recombinant protein encompassing a sequence within the N-terminus region of human MYH9. The exact sequence is proprietary.
Purification	Purified by antigen-affinity chromatography.
Conjugation	Unconjugated



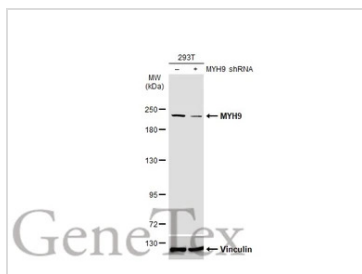
For full product information, images and publications, please visit our [website](#).

For laboratory research use only. Not for any clinical, therapeutic, or diagnostic use in humans or animals. Not for animal or human consumption.

Note

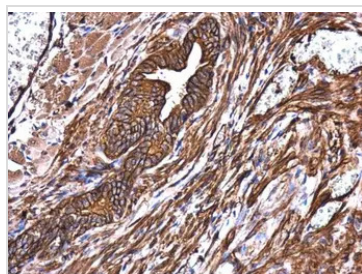
Purchasers shall not, and agree not to enable third parties to, analyze, copy, reverse engineer or otherwise attempt to determine the structure or sequence of the product.

DATA IMAGES



GTX113236 WB Image

Non-transfected (–) and transfected (+) 293T whole cell extracts (30 µg) were separated by 5% SDS-PAGE, and the membrane was blotted with MYH9 antibody [N1-2], N-term (GTX113236) diluted at 1:5000. The HRP-conjugated anti-rabbit IgG antibody (GTX213110-01) was used to detect the primary antibody.



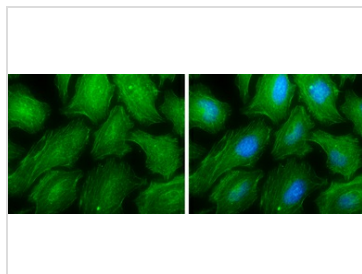
GTX113236 IHC-P Image

MYH9 antibody [N1-2], N-term detects MYH9 protein at cytoplasm in mouse prostate by immunohistochemical analysis.

Sample: Paraffin-embedded mouse prostate.

MYH9 antibody [N1-2], N-term (GTX113236) diluted at 1:400.

Antigen Retrieval: Citrate buffer, pH 6.0, 15 min



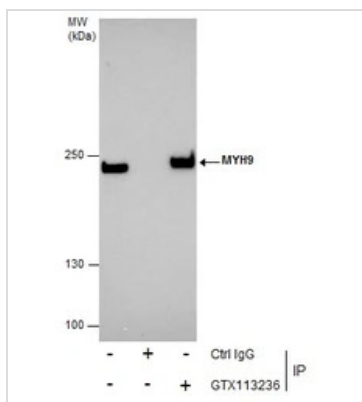
GTX113236 ICC/IF Image

MYH9 antibody [N1-2], N-term detects MYH9 protein at cytoskeleton by immunofluorescent analysis.

Sample: HeLa cells were fixed in ice-cold MeOH for 5 min.

Green: MYH9 stained by MYH9 antibody [N1-2], N-term (GTX113236) diluted at 1:500.

Blue: Hoechst 33342 staining.



GTX113236 IP Image

Immunoprecipitation of MYH9 protein from HeLa whole cell extracts using 5 µg of MYH9 antibody [N1-2], N-term (GTX113236).

Western blot analysis was performed using MYH9 antibody [N1-2], N-term (GTX113236).

EasyBlot anti-Rabbit IgG (GTX221666-01) was used as a secondary reagent.



For full product information, images and publications, please visit our [website](https://www.genetex.com).