

PAX6 antibody

Cat. No. GTX113241

Host	Rabbit
Clonality	Polyclonal
Isotype	IgG
Applications	WB, ICC/IF, IHC-P, IHC-Fr, IHC-Wm, IP
Reactivity	Human, Mouse, Rat, Zebrafish

References (16)

Package

100 µl, 25 µl

Applications

Application Note

*Optimal dilutions/concentrations should be determined by the researcher.

Suggested dilution	Recommended dilution
WB	1:500-1:3000
ICC/IF	1:100-1:1000
IHC-P	1:100-1:1000
IHC-Fr	1:100-1:1000
IHC-Wm	Assay dependent
IP	1:1000-1:1000

Not tested in other applications.

Calculated MW 47 kDa. ([Note](#))

Properties

Form	Liquid
Buffer	PBS, 20% Glycerol
Preservative	0.025% ProClin 300
Storage	Store as concentrated solution. Centrifuge briefly prior to opening vial. For short-term storage (1-2 weeks), store at 4°C. For long-term storage, aliquot and store at -20°C or below. Avoid multiple freeze-thaw cycles.
Concentration	1.79 mg/ml (Please refer to the vial label for the specific concentration.)
Immunogen	Recombinant protein encompassing a sequence within the center region of human PAX6. The exact sequence is proprietary.
Purification	Purified by antigen-affinity chromatography.
Conjugation	Unconjugated



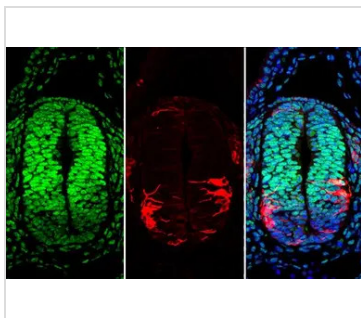
For full product information, images and publications, please visit our [website](#).

For laboratory research use only. Not for any clinical, therapeutic, or diagnostic use in humans or animals. Not for animal or human consumption.

Note

Purchasers shall not, and agree not to enable third parties to, analyze, copy, reverse engineer or otherwise attempt to determine the structure or sequence of the product.

DATA IMAGES



GTX113241 IHC-P Image

PAX6 antibody detects PAX6 protein at nucleus by immunohistochemical analysis.

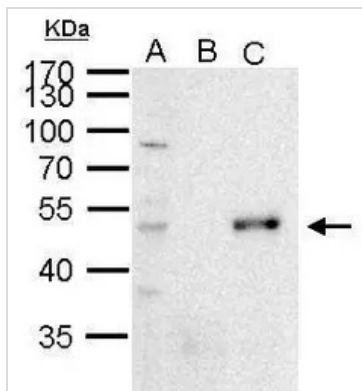
Sample: Paraffin-embedded mouse E10.5 embryo.

Green: PAX6 stained by PAX6 antibody (GTX113241) diluted at 1:250.

Red: beta Tubulin 3/ Tuj1, a cytoskeleton marker, stained by beta Tubulin 3/ Tuj1 antibody [GT11710] (GTX631836) diluted at 1:500.

Blue: Fluoroshield with DAPI (GTX30920).

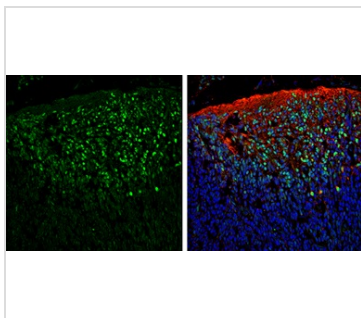
Antigen Retrieval: Citrate buffer, pH 6.0, 15 min



GTX113241 IP Image

PAX6 antibody immunoprecipitates PAX6 protein in IP experiments. IP Sample: 1000 µg 293T whole cell lysate/extract A. 50 µg 293T whole cell lysate/extract B. Control with 2 µg of preimmune rabbit IgG C.

Immunoprecipitation of PAX6 protein by 2 µg of PAX6 antibody (GTX113241) 10% SDS-PAGE The immunoprecipitated PAX6 protein was detected by PAX6 antibody (GTX113241) diluted at 1:1000. EasyBlot anti-rabbit IgG (GTX221666-01) was used as a secondary reagent.



GTX113241 IHC-Fr Image

PAX6 antibody detects PAX6 protein expression by immunohistochemical analysis.

Sample: Frozen sectioned E13.5 Rat brain.

Green: PAX6 protein stained by PAX6 antibody (GTX113241) diluted at 1:250.

Red: beta Tubulin 3/ TUJ1, a mature neuron marker, stained by beta Tubulin 3/ TUJ1 antibody [GT11710] (GTX631836) diluted at 1:500.

Blue: Fluoroshield with DAPI (GTX30920).



For full product information, images and publications, please visit our [website](https://www.genetex.com).