

# PIN1 antibody [N1C3-2]

**Cat. No. GTX113245**

<b>Host</b>	Rabbit
<b>Clonality</b>	Polyclonal
<b>Isotype</b>	IgG
<b>Applications</b>	WB, ICC/IF
<b>Reactivity</b>	Human, Mouse, Rat

**References** ( 1 )

**Package**

100 µl, 25 µl

## Applications

### Application Note

\*Optimal dilutions/concentrations should be determined by the researcher.

Suggested dilution	Recommended dilution
WB	1:500-1:3000
ICC/IF	1:100-1:1000

Not tested in other applications.

**Calculated MW** 18 kDa. ( [Note](#) )

## Properties

<b>Form</b>	Liquid
<b>Buffer</b>	0.1M Tris, 0.1M Glycine, 10% Glycerol
<b>Preservative</b>	0.01% Thimerosal
<b>Storage</b>	Store as concentrated solution. Centrifuge briefly prior to opening vial. For short-term storage (1-2 weeks), store at 4°C. For long-term storage, aliquot and store at -20°C or below. Avoid multiple freeze-thaw cycles.
<b>Concentration</b>	0.68 mg/ml (Please refer to the vial label for the specific concentration.)
<b>Immunogen</b>	Recombinant protein encompassing a sequence within the center region of human PIN1. The exact sequence is proprietary.
<b>Purification</b>	Purified by antigen-affinity chromatography.
<b>Conjugation</b>	Unconjugated

### Note

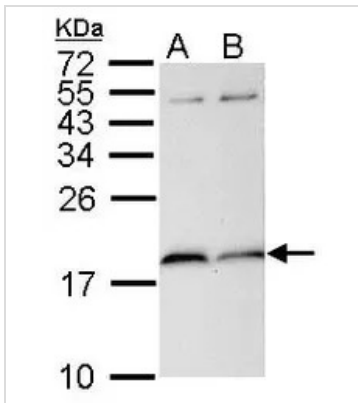
For laboratory research use only. Not for any clinical, therapeutic, or diagnostic use in humans or animals. Not for animal or human consumption.

Purchasers shall not, and agree not to enable third parties to, analyze, copy, reverse engineer or otherwise attempt to determine the structure or sequence of the product.



For full product information, images and publications, please visit our [website](#).

DATA IMAGES



**GTx113245 WB Image**

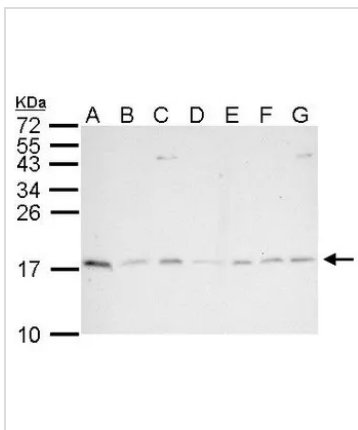
PIN1 antibody detects PIN1 protein by Western blot analysis.

A. 30  $\mu$ g PC-12 whole cell lysate/extract

B. 30  $\mu$ g Rat2 whole cell lysate/extract

15 % SDS-PAGE

PIN1 antibody (GTx113245) dilution: 1:1000



**GTx113245 WB Image**

PIN1 antibody detects PIN1 protein by Western blot analysis.

A. 30  $\mu$ g Neuro2A whole cell lysate/extract

B. 30  $\mu$ g GL261 whole cell lysate/extract

C. 30  $\mu$ g C8D30 whole cell lysate/extract

D. 30  $\mu$ g NIH-3T3 whole cell lysate/extract

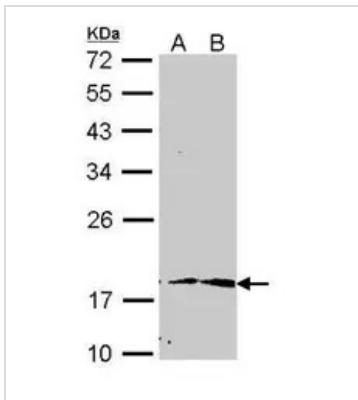
E. 30  $\mu$ g BCL-1 whole cell lysate/extract

F. 30  $\mu$ g Raw264.7 whole cell lysate/extract

G. 30  $\mu$ g C2C12 whole cell lysate/extract

15 % SDS-PAGE

PIN1 antibody (GTx113245) dilution: 1:1000



**GTx113245 WB Image**

Sample (30  $\mu$ g of whole cell lysate)

A: Hep G2 (GTx27900)

B: Raji

12% SDS PAGE

GTx113245 diluted at 1:1000



For full product information, images and publications, please visit our [website](http://www.genetex.com).