

PKC beta antibody

Cat. No. GTX113252

| | |
|---------------------|-------------------------------------|
| Host | Rabbit |
| Clonality | Polyclonal |
| Isotype | IgG |
| Applications | WB, ICC/IF, IHC-P, Functional Assay |
| Reactivity | Human, Rat, Xenopus |

References (6)

Package

100 µl, 25 µl

Applications

Application Note

*Optimal dilutions/concentrations should be determined by the researcher.

| Suggested dilution | Recommended dilution |
|--------------------|----------------------|
| WB | 1:500-1:3000 |
| ICC/IF | 1:100-1:1000 |
| IHC-P | 1:100-1:1000 |
| Functional Assay | Assay dependent |

Not tested in other applications.

Calculated MW 77 kDa. ([Note](#))

Properties

| | |
|----------------------|--|
| Form | Liquid |
| Buffer | PBS, 1% BSA, 20% Glycerol |
| Preservative | 0.025% ProClin 300 |
| Storage | Store as concentrated solution. Centrifuge briefly prior to opening vial. For short-term storage (1-2 weeks), store at 4°C. For long-term storage, aliquot and store at -20°C or below. Avoid multiple freeze-thaw cycles. |
| Concentration | 0.48 mg/ml (Please refer to the vial label for the specific concentration.) |
| Immunogen | Recombinant protein encompassing a sequence within the center region of human PKC beta. The exact sequence is proprietary. |
| Purification | Purified by antigen-affinity chromatography. |
| Conjugation | Unconjugated |

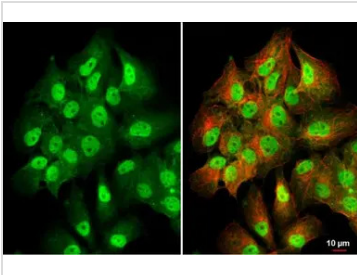


For full product information, images and publications, please visit our [website](#).

For laboratory research use only. Not for any clinical, therapeutic, or diagnostic use in humans or animals. Not for animal or human consumption.

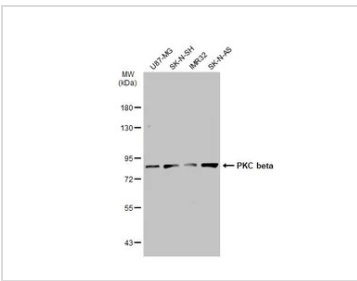
Note
Purchasers shall not, and agree not to enable third parties to, analyze, copy, reverse engineer or otherwise attempt to determine the structure or sequence of the product.

DATA IMAGES



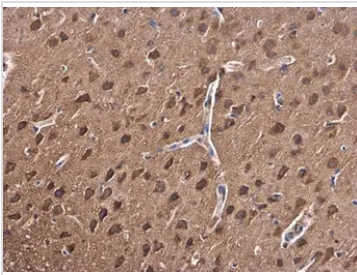
GTX113252 ICC/IF Image

PKC beta antibody detects PKC beta protein at cytoplasm and nucleus by immunofluorescent analysis.
Sample: SK-N-AS cells were fixed in 4% paraformaldehyde at RT for 15 min.
Green: PKC beta stained by PKC beta antibody (GTX113252) diluted at 1:500.
Red: alpha Tubulin, a cytoskeleton marker, stained by alpha Tubulin antibody [GT114] (GTX628802) diluted at 1:1000.



GTX113252 WB Image

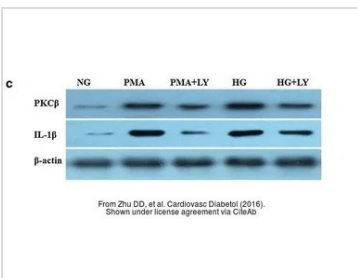
Various whole cell extracts (30 µg) were separated by 7.5% SDS-PAGE, and the membrane was blotted with PKC beta antibody (GTX113252) diluted at 1:1000. The HRP-conjugated anti-rabbit IgG antibody (GTX213110-01) was used to detect the primary antibody.



GTX113252 IHC-P Image

PKC beta antibody detects PKC beta protein at cytoplasm in rat brain by immunohistochemical analysis.
Sample: Paraffin-embedded rat brain.
PKC beta antibody (GTX113252) diluted at 1:500.

Antigen Retrieval: Citrate buffer, pH 6.0, 15 min



GTX113252 WB Image

The data was published in the journal Cardiovasc Diabetol in 2016. [PMID: 26944557](https://pubmed.ncbi.nlm.nih.gov/26944557/)



For full product information, images and publications, please visit our [website](http://www.genetex.com).