

## RAC2 antibody [N1C3]

Cat. No. GTX113262

|              |                   |
|--------------|-------------------|
| Host         | Rabbit            |
| Clonality    | Polyclonal        |
| Isotype      | IgG               |
| Applications | WB, ICC/IF, IHC-P |
| Reactivity   | Human, Mouse      |

Package  
100 µl, 25 µl

## Applications

## Application Note

\*Optimal dilutions/concentrations should be determined by the researcher.

| Suggested dilution | Recommended dilution |
|--------------------|----------------------|
| WB                 | 1:500-1:3000         |
| ICC/IF             | Assay dependent      |
| IHC-P              | 1:100-1:1000         |

Not tested in other applications.

Calculated MW 21 kDa. ( [Note](#) )

## Properties

|               |  |
|---------------|--|
| Form          | Liquid   |
| Buffer        | PBS, 20% Glycerol  |
| Preservative  | 0.025% ProClin 300   |
| Storage       | Store as concentrated solution. Centrifuge briefly prior to opening vial. For short-term storage (1-2 weeks), store at 4°C. For long-term storage, aliquot and store at -20°C or below. Avoid multiple freeze-thaw cycles. |
| Concentration | 1.43 mg/ml (Please refer to the vial label for the specific concentration.)  |
| Immunogen     | Recombinant protein encompassing a sequence within the center region of human RAC2. The exact sequence is proprietary.   |
| Purification  | Purified by antigen-affinity chromatography.   |
| Conjugation   | Unconjugated   |

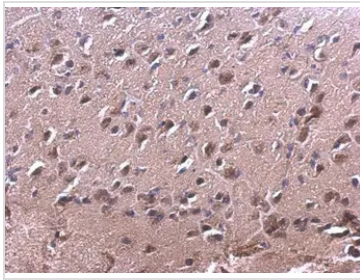
## Note

For laboratory research use only. Not for any clinical, therapeutic, or diagnostic use in humans or animals. Not for animal or human consumption.

Purchasers shall not, and agree not to enable third parties to, analyze, copy, reverse engineer or otherwise attempt to determine the structure or sequence of the product.



For full product information, images and publications, please visit our [website](#).

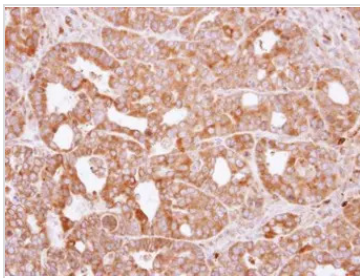
**DATA IMAGES**

**GTx113262 IHC-P Image**

RAC2 antibody [N1C3] detects RAC2 protein at cytosol on mouse fore brain by immunohistochemical analysis.

Sample: Paraffin-embedded mouse fore brain.

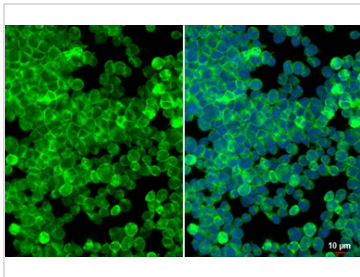
RAC2 antibody [N1C3] (GTx113262) dilution: 1:500.

Antigen Retrieval: Trilogy™ (EDTA based, pH 8.0) buffer, 15min


**GTx113262 IHC-P Image**

Immunohistochemical analysis of paraffin-embedded NCI-N87 xenograft, using RAC2(GTx113262) antibody at 1:500 dilution.

Antigen Retrieval: Trilogy™ (EDTA based, pH 8.0) buffer, 15min

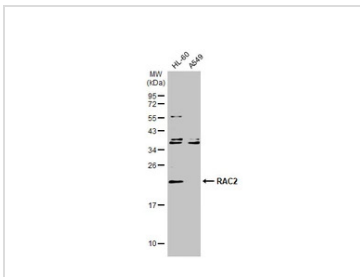

**GTx113262 ICC/IF Image**

RAC2 antibody [N1C3] detects RAC2 protein at cell membrane and cytoplasm by immunofluorescent analysis.

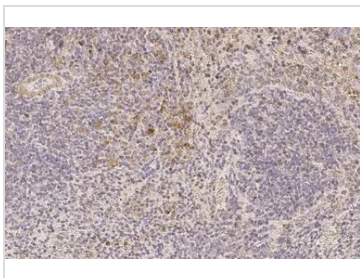
Sample: MOLT-4 cells were fixed in 4% paraformaldehyde at RT for 15 min.

Green: RAC2 stained by RAC2 antibody [N1C3] (GTx113262) diluted at 1:500.

Blue: Fluoroshield with DAPI (GTx30920).


**GTx113262 WB Image**

Various whole cell extracts (30 µg) were separated by 12% SDS-PAGE, and the membrane was blotted with RAC2 antibody [N1C3] (GTx113262) diluted at 1:1000. The HRP-conjugated anti-rabbit IgG antibody (GTx213110-01) was used to detect the primary antibody.


**GTx113262 IHC-P Image**

RAC2 antibody [N1C3] detects RAC2 protein at cytoplasm by immunohistochemical analysis.

Sample: Paraffin-embedded mouse spleen.

RAC2 stained by RAC2 antibody [N1C3] (GTx113262) diluted at 1:500.

Antigen Retrieval: Citrate buffer, pH 6.0, 15 min



For full product information, images and publications, please visit our [website](#).