

SIAH1 antibody

Cat. No. GTX113268

Host	Rabbit
Clonality	Polyclonal
Isotype	IgG
Applications	WB, IHC-P, PLA
Reactivity	Human

References (1)

Package

100 µl, 25 µl

Applications

Application Note

*Optimal dilutions/concentrations should be determined by the researcher.

Suggested dilution	Recommended dilution
WB	1:500-1:3000
IHC-P	1:100-1:1000
PLA	Assay dependent

Not tested in other applications.

Calculated MW	31 kDa. (Note)
Product Note	Knockdown/Knockout validation was supported by references (PMID:35705526)

Properties

Form	Liquid
Buffer	0.1M Tris, 0.1M Glycine, 10% Glycerol
Preservative	0.01% Thimerosal
Storage	Store as concentrated solution. Centrifuge briefly prior to opening vial. For short-term storage (1-2 weeks), store at 4°C. For long-term storage, aliquot and store at -20°C or below. Avoid multiple freeze-thaw cycles.
Concentration	1 mg/ml (Please refer to the vial label for the specific concentration.)
Immunogen	Recombinant protein encompassing a sequence within the center region of human SIAH1. The exact sequence is proprietary.
Purification	Purified by antigen-affinity chromatography.
Conjugation	Unconjugated



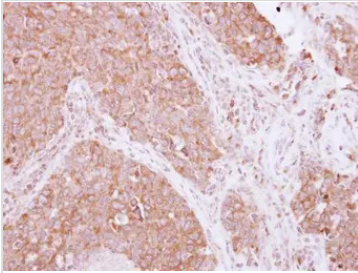
For full product information, images and publications, please visit our [website](#).

For laboratory research use only. Not for any clinical, therapeutic, or diagnostic use in humans or animals. Not for animal or human consumption.

Note

Purchasers shall not, and agree not to enable third parties to, analyze, copy, reverse engineer or otherwise attempt to determine the structure or sequence of the product.

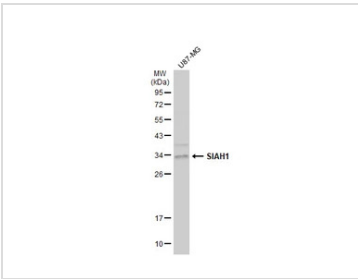
DATA IMAGES



GTx113268 IHC-P Image

Immunohistochemical analysis of paraffin-embedded human lung Papillary adenocarcinoma, using SIAH1(GTx113268) antibody at 1:250 dilution.

Antigen Retrieval: Trilogy™ (EDTA based, pH 8.0) buffer, 15min



GTx113268 WB Image

Whole cell extract (30 µg) was separated by 12% SDS-PAGE, and the membrane was blotted with SIAH1 antibody (GTx113268) diluted at 1:1000. The HRP-conjugated anti-rabbit IgG antibody (GTx213110-01) was used to detect the primary antibody.



For full product information, images and publications, please visit our [website](#).