

Thymidine Kinase 1 antibody

Cat. No. GTX113281

Host	Rabbit
Clonality	Polyclonal
Isotype	IgG
Application	WB, IHC-P
Reactivity	Human, Mouse, Rat

Reference (4)

Package

100 µl, 25 µl

APPLICATION

Application Note

*Optimal dilutions/concentrations should be determined by the researcher.

Suggested dilution	Recommended dilution
WB	1:500-1:3000
IHC-P	1:100-1:1000

Not tested in other applications.

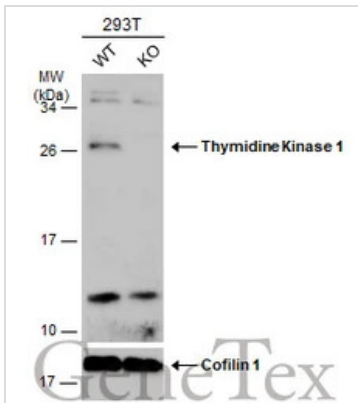
Calculated MW 25 kDa. ([Note](#))

PROPERTIES

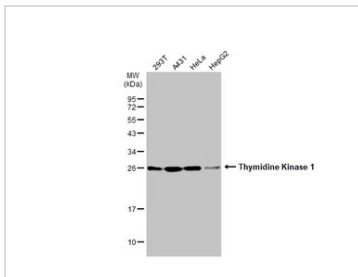
Form	Liquid
Buffer	PBS, 20% Glycerol
Preservative	0.025% ProClin 300
Storage	Store as concentrated solution. Centrifuge briefly prior to opening vial. For short-term storage (1-2 weeks), store at 4°C. For long-term storage, aliquot and store at -20°C or below. Avoid multiple freeze-thaw cycles.
Concentration	1.01 mg/ml (Please refer to the vial label for the specific concentration.)
Immunogen	Recombinant protein encompassing a sequence within the center region of human Thymidine Kinase 1. The exact sequence is proprietary.
Purification	Purified by antigen-affinity chromatography.
Conjugation	Unconjugated
Note	<p>For laboratory research use only. Not for any clinical, therapeutic, or diagnostic use in humans or animals. Not for animal or human consumption.</p> <p>Purchasers shall not, and agree not to enable third parties to, analyze, copy, reverse engineer or otherwise attempt to determine the structure or sequence of the product.</p>



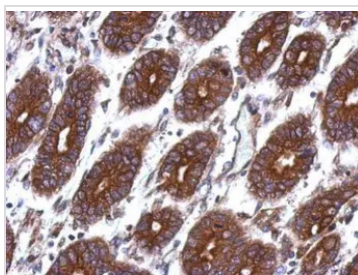
For full product information, images and publications, please visit our [website](#).

DATA IMAGES

GTx113281 WB Image

Wild-type (WT) and Thymidine Kinase 1 knockout (KO) 293T cell extracts (30 µg) were separated by 12% SDS-PAGE, and the membrane was blotted with Thymidine Kinase 1 antibody (GTx113281) diluted at 1:500. The HRP-conjugated anti-rabbit IgG antibody (GTx213110-01) was used to detect the primary antibody, and the signal was developed with Trident ECL plus-Enhanced.

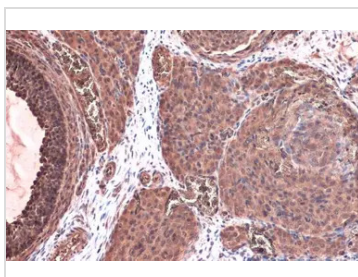

GTx113281 WB Image

Various whole cell extracts (30 µg) were separated by 12% SDS-PAGE, and the membrane was blotted with Thymidine Kinase 1 antibody (GTx113281) diluted at 1:1000. The HRP-conjugated anti-rabbit IgG antibody (GTx213110-01) was used to detect the primary antibody.


GTx113281 IHC-P Image

Immunohistochemical analysis of paraffin-embedded human colon carcinoma, using Thymidine Kinase 1 (GTx113281) antibody at 1:500 dilution.

Antigen Retrieval: Trilogy™ (EDTA based, pH 8.0) buffer, 15min


GTx113281 IHC-P Image

Thymidine Kinase 1 antibody detects Thymidine Kinase 1 protein at cytoplasm by immunohistochemical analysis.

Sample: Paraffin-embedded rat ovary.

Thymidine Kinase 1 stained by Thymidine Kinase 1 antibody (GTx113281) diluted at 1:500.

Antigen Retrieval: Citrate buffer, pH 6.0, 15 min



For full product information, images and publications, please visit our [website](https://www.genetex.com).