

## gamma Tubulin antibody

**Cat. No. GTX113286**

<b>Host</b>	Rabbit
<b>Clonality</b>	Polyclonal
<b>Isotype</b>	IgG
<b>Applications</b>	WB, ICC/IF, IHC-P, IHC-Wm, IP, IHC (Formalin), IHC
<b>Reactivity</b>	Human, Mouse, Rat, Zebrafish

References ( 19 )

★★★★★ Review ( 2 )

Package

100 µl, 25 µl

## Applications

**Application Note**

\*Optimal dilutions/concentrations should be determined by the researcher.

Suggested dilution	Recommended dilution
WB	1:500-1:3000
ICC/IF	1:100-1:1000
IHC-P	1:100-1:1000
IHC-Wm	Assay dependent
IP	1:100-1:500
IHC (Formalin)	Assay dependent
IHC	Assay dependent

Not tested in other applications.

**Calculated MW** 51 kDa. ( [Note](#) )

## Properties

<b>Form</b>	Liquid
<b>Buffer</b>	PBS, 1% BSA, 20% Glycerol
<b>Preservative</b>	0.025% ProClin 300
<b>Storage</b>	Store as concentrated solution. Centrifuge briefly prior to opening vial. For short-term storage (1-2 weeks), store at 4°C. For long-term storage, aliquot and store at -20°C or below. Avoid multiple freeze-thaw cycles.
<b>Concentration</b>	0.24 mg/ml (Please refer to the vial label for the specific concentration.)
<b>Immunogen</b>	Recombinant protein encompassing a sequence within the center region of human gamma Tubulin. The exact sequence is proprietary.
<b>Purification</b>	Purified by antigen-affinity chromatography.
<b>Conjugation</b>	Unconjugated

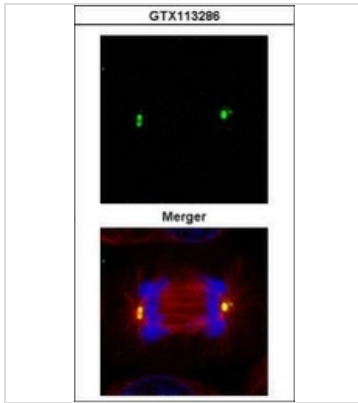


For full product information, images and publications, please visit our [website](#).

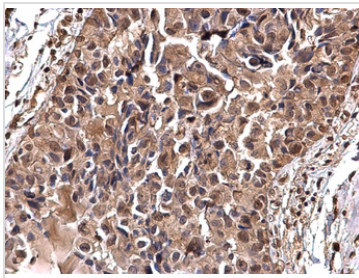
For laboratory research use only. Not for any clinical, therapeutic, or diagnostic use in humans or animals. Not for animal or human consumption.

**Note**

Purchasers shall not, and agree not to enable third parties to, analyze, copy, reverse engineer or otherwise attempt to determine the structure or sequence of the product.

**DATA IMAGES**

**GTX113286 ICC/IF Image**

Confocal immunofluorescence analysis (Olympus FV10i) of methanol-fixed 293T, using gamma Tubulin(GTX113286) antibody (Green) at 1:500 dilution. Alpha-tubulin filaments were labeled with GTX11304 (Red) at 1:500.

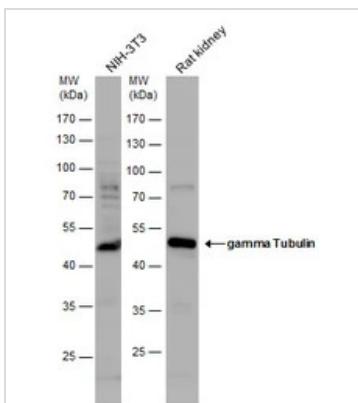

**GTX113286 IHC-P Image**

gamma Tubulin antibody detects gamma Tubulin protein at nucleus on human breast carcinoma by immunohistochemical analysis.

Sample: Paraffin-embedded human breast carcinoma.

gamma Tubulin antibody (GTX113286) dilution: 1:500.

Antigen Retrieval: Trilogy™ (EDTA based, pH 8.0) buffer, 15min


**GTX113286 WB Image**

gamma Tubulin antibody detects gamma Tubulin protein by western blot analysis. NIH3T3 whole cell extracts (30 µg) and rat tissue extracts (50 µg) were separated by 10% SDS-PAGE, and the membrane was blotted with gamma Tubulin antibody (GTX113286) diluted by 1:1000. The HRP-conjugated anti-rabbit IgG antibody (GTX213110-01) was used to detect the primary antibody.



For full product information, images and publications, please visit our [website](https://www.genetex.com).