

## XBP1 antibody [N1C3]

Cat. No. GTX113295

|             |              |
|-------------|--------------|
| Host        | Rabbit       |
| Clonality   | Polyclonal   |
| Isotype     | IgG          |
| Application | WB           |
| Reactivity  | Human, Mouse |

Reference ( 2 )

★★★★★ Review ( 1 )

Package

100 µl, 25 µl

## APPLICATION

## Application Note

\*Optimal dilutions/concentrations should be determined by the researcher.

| Suggested dilution | Recommended dilution |
|--------------------|----------------------|
| WB                 | 1:500-1:3000         |

Not tested in other applications.

Calculated MW 29 kDa. ( [Note](#) )

## PROPERTIES

|               |  |
|---------------|--|
| Form          | Liquid   |
| Buffer        | PBS, 1% BSA, 20% Glycerol  |
| Preservative  | 0.01% Thimerosal   |
| Storage       | Store as concentrated solution. Centrifuge briefly prior to opening vial. For short-term storage (1-2 weeks), store at 4°C. For long-term storage, aliquot and store at -20°C or below. Avoid multiple freeze-thaw cycles. |
| Concentration | 1 mg/ml (Please refer to the vial label for the specific concentration.)   |
| Immunogen     | Recombinant protein encompassing a sequence within the center region of human XBP1. The exact sequence is proprietary.   |
| Purification  | Purified by antigen-affinity chromatography.   |
| Conjugation   | Unconjugated   |

## Note

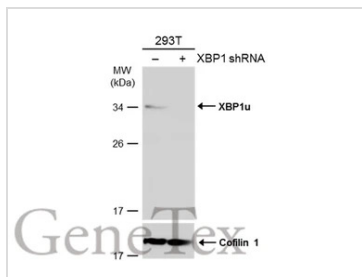
For laboratory research use only. Not for any clinical, therapeutic, or diagnostic use in humans or animals. Not for animal or human consumption.

Purchasers shall not, and agree not to enable third parties to, analyze, copy, reverse engineer or otherwise attempt to determine the structure or sequence of the product.



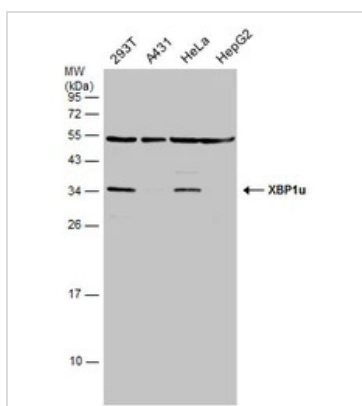
For full product information, images and publications, please visit our [website](#).

## DATA IMAGES



### GTXT113295 WB Image

Non-transfected (–) and transfected (+) 293T whole cell extracts (30 µg) were separated by 12% SDS-PAGE, and the membrane was blotted with XBP1 antibody [N1C3] (GTXT113295) diluted at 1:2000. The HRP-conjugated anti-rabbit IgG antibody (GTXT213110-01) was used to detect the primary antibody, and the signal was developed with Trident ECL plus-Enhanced.



### GTXT113295 WB Image

Various whole cell extracts (30 µg) were separated by 12% SDS-PAGE, and the membrane was blotted with XBP1 antibody [N1C3] (GTXT113295) diluted at 1:1000. The HRP-conjugated anti-rabbit IgG antibody (GTXT213110-01) was used to detect the primary antibody.



For full product information, images and publications, please visit our [website](https://www.genetex.com).