

## 14-3-3 beta antibody [N1C2]

Cat. No. GTX113296

Host	Rabbit
Clonality	Polyclonal
Isotype	IgG
Applications	WB, ICC/IF, IHC-P
Reactivity	Human, Mouse, Rat

Package  
100 µl, 25 µl

## Applications

## Application Note

\*Optimal dilutions/concentrations should be determined by the researcher.

Suggested dilution	Recommended dilution
WB	1:5000-1:20000
ICC/IF	1:100-1:1000
IHC-P	1:100-1:1000

Not tested in other applications.

Calculated MW 28 kDa. ( [Note](#) )

## Properties

Form	Liquid
Buffer	0.1M Tris, 0.1M Glycine, 10% Glycerol
Preservative	0.01% Thimerosal
Storage	Store as concentrated solution. Centrifuge briefly prior to opening vial. For short-term storage (1-2 weeks), store at 4°C. For long-term storage, aliquot and store at -20°C or below. Avoid multiple freeze-thaw cycles.
Concentration	1 mg/ml (Please refer to the vial label for the specific concentration.)
Immunogen	Recombinant protein encompassing a sequence within the center region of human 14-3-3 beta. The exact sequence is proprietary.
Purification	Purified by antigen-affinity chromatography.
Conjugation	Unconjugated

## Note

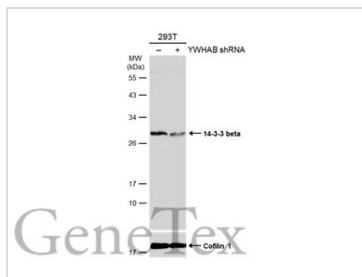
For laboratory research use only. Not for any clinical, therapeutic, or diagnostic use in humans or animals. Not for animal or human consumption.

Purchasers shall not, and agree not to enable third parties to, analyze, copy, reverse engineer or otherwise attempt to determine the structure or sequence of the product.



For full product information, images and publications, please visit our [website](#).

Date 2026 / 01 / 11 Page 1 of 2

**DATA IMAGES**

**GTx113296 WB Image**

Non-transfected (–) and transfected (+) 293T whole cell extracts (30 µg) were separated by 12% SDS-PAGE, and the membrane was blotted with 14-3-3 beta antibody [N1C2] (GTx113296) diluted at 1:10000. The HRP-conjugated anti-rabbit IgG antibody (GTx213110-01) was used to detect the primary antibody.

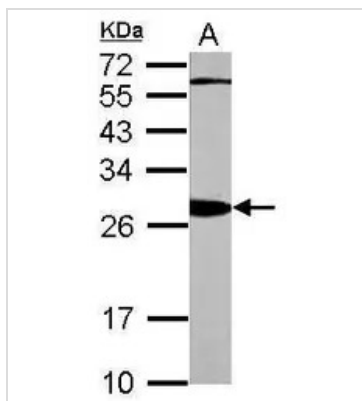

**GTx113296 IHC-P Image**

14-3-3 beta antibody [N1C2] detects 14-3-3 beta protein at cytoplasm in rat cervix by immunohistochemical analysis.

Sample: Paraffin-embedded rat cervix.

14-3-3 beta antibody [N1C2] (GTx113296) diluted at 1:500.

Antigen Retrieval: Citrate buffer, pH 6.0, 15 min

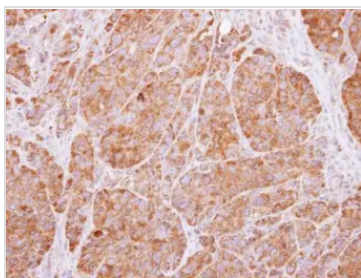

**GTx113296 WB Image**

Sample (20 ug of whole cell lysate)

A: mouse brain

12% SDS PAGE

GTx113296 diluted at 1:10000


**GTx113296 IHC-P Image**

Immunohistochemical analysis of paraffin-embedded SW480 xenograft, using 14-3-3 beta (GTx113296) antibody at 1:500 dilution.

Antigen Retrieval: Citrate buffer, pH 6.0, 15 min



For full product information, images and publications, please visit our [website](http://www.genetex.com).