

## 14-3-3 beta antibody [N1C3]

Cat. No. GTX113297

|             |                   |
|-------------|-------------------|
| Host        | Rabbit            |
| Clonality   | Polyclonal        |
| Isotype     | IgG               |
| Application | WB, ICC/IF, IHC-P |
| Reactivity  | Human, Mouse      |

Package  
100 µl, 25 µl

## APPLICATION

## Application Note

\*Optimal dilutions/concentrations should be determined by the researcher.

| Suggested dilution | Recommended dilution |
|--------------------|----------------------|
| WB                 | 1:1000-1:10000       |
| ICC/IF             | 1:100-1:1000         |
| IHC-P              | 1:100-1:1000         |

Not tested in other applications.

Calculated MW 28 kDa. ( [Note](#) )

## PROPERTIES

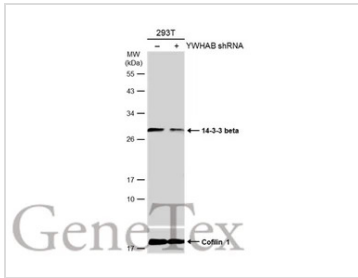
|               |  |
|---------------|--|
| Form          | Liquid   |
| Buffer        | 0.1M Tris, 0.1M Glycine, 10% Glycerol  |
| Preservative  | 0.01% Thimerosal   |
| Storage       | Store as concentrated solution. Centrifuge briefly prior to opening vial. For short-term storage (1-2 weeks), store at 4°C. For long-term storage, aliquot and store at -20°C or below. Avoid multiple freeze-thaw cycles. |
| Concentration | 1 mg/ml (Please refer to the vial label for the specific concentration.)   |
| Immunogen     | Recombinant protein encompassing a sequence within the center region of human 14-3-3 beta. The exact sequence is proprietary.  |
| Purification  | Purified by antigen-affinity chromatography.   |
| Conjugation   | Unconjugated   |

**Note** For laboratory research use only. Not for any clinical, therapeutic, or diagnostic use in humans or animals. Not for animal or human consumption.

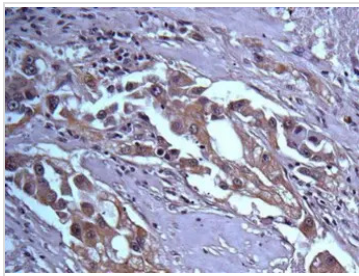
Purchasers shall not, and agree not to enable third parties to, analyze, copy, reverse engineer or otherwise attempt to determine the structure or sequence of the product.



For full product information, images and publications, please visit our [website](#).

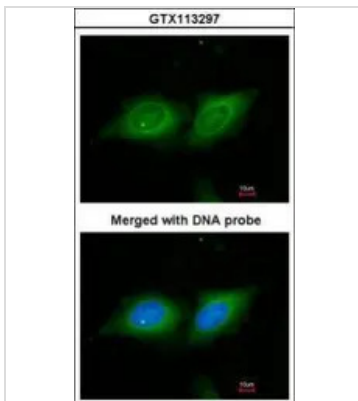
**DATA IMAGES**

**GTX113297 WB Image**

Non-transfected (–) and transfected (+) 293T whole cell extracts (30 µg) were separated by 12% SDS-PAGE, and the membrane was blotted with 14-3-3 beta antibody [N1C3] (GTX113297) diluted at 1:5000. The HRP-conjugated anti-rabbit IgG antibody (GTX213110-01) was used to detect the primary antibody.

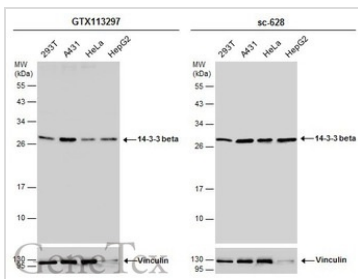

**GTX113297 IHC-P Image**

Immunohistochemical analysis of paraffin-embedded human breast cancer, using 14-3-3 beta(GTX113297) antibody at 1:500 dilution.

Antigen Retrieval: Trilogy™ (EDTA based, pH 8.0) buffer, 15min


**GTX113297 ICC/IF Image**

Immunofluorescence analysis of paraformaldehyde-fixed HeLa, using 14-3-3 beta (GTX113297) antibody at 1:200 dilution.


**GTX113297 WB Image**

Various whole cell extracts (30 µg) were separated by 12% SDS-PAGE, and the membranes were blotted with 14-3-3 beta antibody [N1C2] (GTX113297) diluted at 1:5000 and competitor's antibody (sc-628) diluted at 1:1000. The HRP-conjugated anti-rabbit IgG antibody (GTX213110-01) was used to detect the primary antibody.

\*The competitor is not affiliated with GeneTex and does not endorse this product.



For full product information, images and publications, please visit our [website](https://www.genetex.com).