

# 14-3-3 gamma antibody

**Cat. No. GTX113298**

<b>Host</b>	Rabbit
<b>Clonality</b>	Polyclonal
<b>Isotype</b>	IgG
<b>Application</b>	WB, ICC/IF, IHC-P, IP
<b>Reactivity</b>	Human, Mouse, Rat

Reference ( 2 )  
 Package  
 100 µl, 25 µl

## APPLICATION

### Application Note

\*Optimal dilutions/concentrations should be determined by the researcher.

Suggested dilution	Recommended dilution
WB	1:500-1:10000
ICC/IF	1:100-1:1000
IHC-P	1:100-1:1000
IP	Assay dependent

Not tested in other applications.

**Calculated MW** 28 kDa. ( [Note](#) )

## PROPERTIES

<b>Form</b>	Liquid
<b>Buffer</b>	PBS, 20% Glycerol
<b>Preservative</b>	0.025% ProClin 300
<b>Storage</b>	Store as concentrated solution. Centrifuge briefly prior to opening vial. For short-term storage (1-2 weeks), store at 4°C. For long-term storage, aliquot and store at -20°C or below. Avoid multiple freeze-thaw cycles.
<b>Concentration</b>	1.05 mg/ml (Please refer to the vial label for the specific concentration.)
<b>Immunogen</b>	Recombinant protein encompassing a sequence within the center region of human 14-3-3 gamma. The exact sequence is proprietary.
<b>Purification</b>	Purified by antigen-affinity chromatography.
<b>Conjugation</b>	Unconjugated

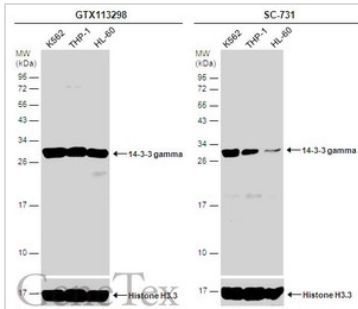


For full product information, images and publications, please visit our [website](#).

For laboratory research use only. Not for any clinical, therapeutic, or diagnostic use in humans or animals. Not for animal or human consumption.

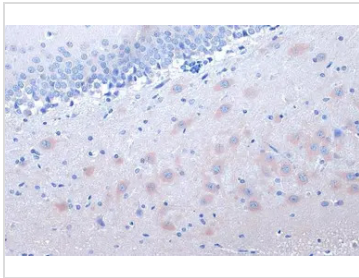
**Note**

Purchasers shall not, and agree not to enable third parties to, analyze, copy, reverse engineer or otherwise attempt to determine the structure or sequence of the product.

**DATA IMAGES**

**GTX113298 WB Image**

Various whole cell extracts (30 µg) were separated by 12% SDS-PAGE, and the membrane was blotted with 14-3-3 gamma antibody (GTX113298) diluted at 1:1000 and competitor's antibody (SC-731) diluted by 1:200. The HRP-conjugated anti-rabbit IgG antibody (GTX213110-01) was used to detect the primary antibody.

\*The competitor is not affiliated with GeneTex and does not endorse this product.

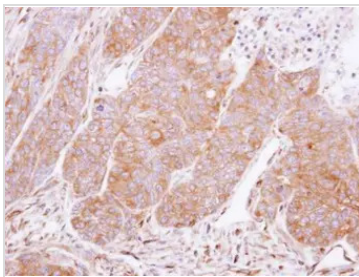

**GTX113298 IHC-P Image**

14-3-3 gamma antibody detects 14-3-3 gamma protein at cytoplasm by immunohistochemical analysis.

Sample: Paraffin-embedded rat brain.

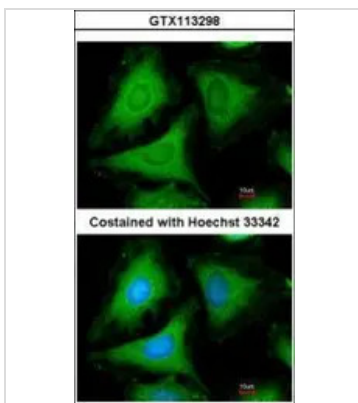
14-3-3 gamma stained by 14-3-3 gamma antibody (GTX113298) diluted at 1:1000.

Antigen Retrieval: Citrate buffer, pH 6.0, 15 min


**GTX113298 IHC-P Image**

Immunohistochemical analysis of paraffin-embedded DLD1 xenograft, using 14-3-3 gamma(GTX113298) antibody at 1:500 dilution.

Antigen Retrieval: Citrate buffer, pH 6.0, 15 min


**GTX113298 ICC/IF Image**

Immunofluorescence analysis of methanol-fixed HeLa, using 14-3-3 gamma(GTX113298) antibody at 1:200 dilution.



For full product information, images and publications, please visit our [website](https://www.genetex.com).