

## SMC1A antibody

Cat. No. GTX113299

Host	Rabbit
Clonality	Polyclonal
Isotype	IgG
Applications	WB, IHC-P, IP
Reactivity	Human, Mouse

Package  
100 µl, 25 µl

## Applications

## Application Note

\*Optimal dilutions/concentrations should be determined by the researcher.

Suggested dilution	Recommended dilution
WB	1:500-1:3000
IHC-P	1:100-1:1000
IP	1:100-1:500

Not tested in other applications.

Calculated MW 143 kDa. ([Note](#))

## Properties

Form	Liquid
Buffer	0.1M Tris, 0.1M Glycine, 20% Glycerol
Preservative	0.01% Thimerosal
Storage	Store as concentrated solution. Centrifuge briefly prior to opening vial. For short-term storage (1-2 weeks), store at 4°C. For long-term storage, aliquot and store at -20°C or below. Avoid multiple freeze-thaw cycles.
Concentration	1 mg/ml (Please refer to the vial label for the specific concentration.)
Immunogen	Recombinant protein encompassing a sequence within the center region of human SMC1A. The exact sequence is proprietary.
Purification	Purified by antigen-affinity chromatography.
Conjugation	Unconjugated

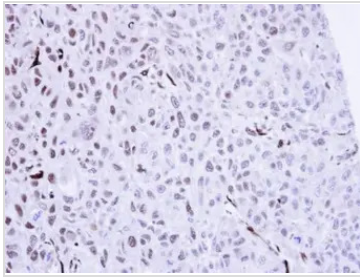
## Note

For laboratory research use only. Not for any clinical, therapeutic, or diagnostic use in humans or animals. Not for animal or human consumption.

Purchasers shall not, and agree not to enable third parties to, analyze, copy, reverse engineer or otherwise attempt to determine the structure or sequence of the product.

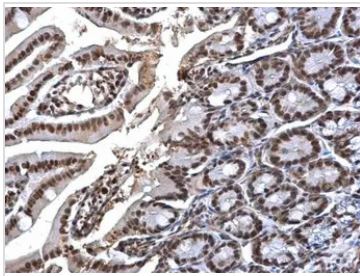


For full product information, images and publications, please visit our [website](#).

**DATA IMAGES**

**GTx113299 IHC-P Image**

Immunohistochemical analysis of paraffin-embedded FaDu Xenograft , using SMC1A(GTx113299) antibody at 1:100 dilution.

Antigen Retrieval: Trilogy™ (EDTA based, pH 8.0) buffer, 15min

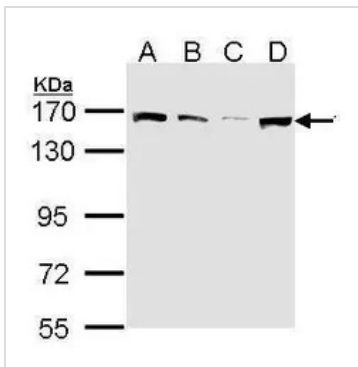

**GTx113299 IHC-P Image**

SMC1A antibody detects SMC1A protein at nucleus on mouse intestine by immunohistochemical analysis.

Sample: Paraffin-embedded mouse intestine.

SMC1A antibody (GTx113299) dilution: 1:500.

Antigen Retrieval: Trilogy™ (EDTA based, pH 8.0) buffer, 15min


**GTx113299 WB Image**

Sample (30 ug of whole cell lysate)

A: 293T

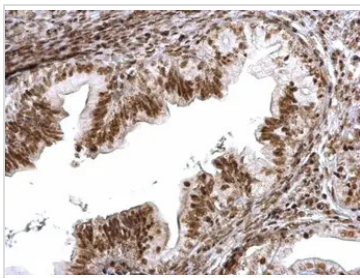
B: A431 (GTx27909)

C: H1299

D: Molt-4 (GTx27912)

5% SDS PAGE

GTx113299 diluted at 1:1000


**GTx113299 IHC-P Image**

SMC1A antibody detects SMC1A protein at nucleus on mouse cervix by immunohistochemical analysis.

Sample: Paraffin-embedded mouse cervix.

SMC1A antibody (GTx113299) dilution: 1:500.

Antigen Retrieval: Trilogy™ (EDTA based, pH 8.0) buffer, 15min



For full product information, images and publications, please visit our [website](https://www.genetex.com).