

## HDAC3 antibody

Cat. No. GTX113303

Host	Rabbit
Clonality	Polyclonal
Isotype	IgG
Applications	WB, ICC/IF, IHC-P, IHC-Wm, IP, ChIP assay
Reactivity	Human, Mouse, Rat, Zebrafish

References ( 6 )

★★★★★ Review ( 1 )

Package

100 µl, 25 µl

## Applications

## Application Note

\*Optimal dilutions/concentrations should be determined by the researcher.

Suggested dilution	Recommended dilution
WB	1:500-1:3000
ICC/IF	1:100-1:1000
IHC-P	1:100-1:1000
IHC-Wm	Assay dependent
IP	1:100-1:500
ChIP assay	Assay dependent

Not tested in other applications.

Calculated MW 49 kDa. ( [Note](#) )

Properties	
Form	Liquid
Buffer	PBS, 20% Glycerol
Preservative	0.025% ProClin 300
Storage	Store as concentrated solution. Centrifuge briefly prior to opening vial. For short-term storage (1-2 weeks), store at 4°C. For long-term storage, aliquot and store at -20°C or below. Avoid multiple freeze-thaw cycles.
Concentration	0.32 mg/ml (Please refer to the vial label for the specific concentration.)
Immunogen	Recombinant protein encompassing a sequence within the center region of human HDAC3. The exact sequence is proprietary.
Purification	Purified by antigen-affinity chromatography.
Conjugation	Unconjugated

For full product information, images and publications, please visit our [website](#).

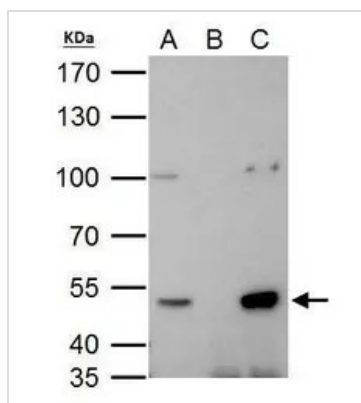
Date 2026 / 01 / 11 Page 1 of 2

For laboratory research use only. Not for any clinical, therapeutic, or diagnostic use in humans or animals. Not for animal or human consumption.

## Note

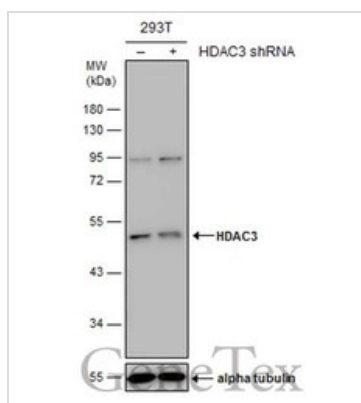
Purchasers shall not, and agree not to enable third parties to, analyze, copy, reverse engineer or otherwise attempt to determine the structure or sequence of the product.

## DATA IMAGES



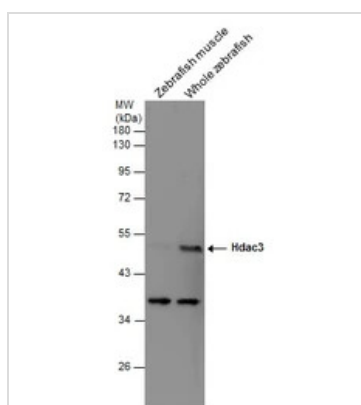
### GTx113303 IP Image

HDAC3 antibody immunoprecipitates HDAC3 protein in IP experiments. IP Sample: 293T whole cell lysate/extract A. 40 µg 293T whole cell lysate/extract B. Control with 2 µg of preimmune rabbit IgG C. Immunoprecipitation of HDAC3 protein by 2 µg of HDAC3 antibody (GTx113303) 7.5% SDS-PAGE The immunoprecipitated HDAC3 protein was detected by HDAC3 antibody (GTx113303) diluted at 1:1000. EasyBlot anti-rabbit IgG (GTx221666-01) was used as a secondary reagent.



### GTx113303 WB Image

Non-transfected (-) and transfected (+) 293T whole cell extracts (30 µg) were separated by 10% SDS-PAGE, and the membrane was blotted with HDAC3 antibody (GTx113303) diluted at 1:500. The HRP-conjugated anti-rabbit IgG antibody (GTx213110-01) was used to detect the primary antibody.



### GTx113303 WB Image

Various tissue extracts (30 µg) were separated by 10% SDS-PAGE, and the membrane was blotted with HDAC3 antibody (GTx113303) diluted at 1:500.



For full product information, images and publications, please visit our [website](http://www.genetex.com).