

HDAC3 antibody

Cat. No. GTX113303

Host	Rabbit
Clonality	Polyclonal
Isotype	IgG
Applications	WB, ICC/IF, IHC-P, IHC-Wm, IP, ChIP assay
Reactivity	Human, Mouse, Rat, Zebrafish

References (6)

★★★★★ Review (1)

Package

100 µl, 25 µl

Applications

Application Note

*Optimal dilutions/concentrations should be determined by the researcher.

Suggested dilution	Recommended dilution
WB	1:500-1:3000
ICC/IF	1:100-1:1000
IHC-P	1:100-1:1000
IHC-Wm	Assay dependent
IP	1:100-1:500
ChIP assay	Assay dependent

Not tested in other applications.

Calculated MW 49 kDa. ([Note](#))

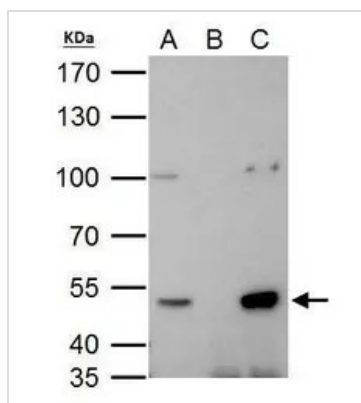
Properties	
Form	Liquid
Buffer	PBS, 20% Glycerol
Preservative	0.025% ProClin 300
Storage	Store as concentrated solution. Centrifuge briefly prior to opening vial. For short-term storage (1-2 weeks), store at 4°C. For long-term storage, aliquot and store at -20°C or below. Avoid multiple freeze-thaw cycles.
Concentration	0.32 mg/ml (Please refer to the vial label for the specific concentration.)
Immunogen	Recombinant protein encompassing a sequence within the center region of human HDAC3. The exact sequence is proprietary.
Purification	Purified by antigen-affinity chromatography.
Conjugation	Unconjugated

For full product information, images and publications, please visit our [website](#).

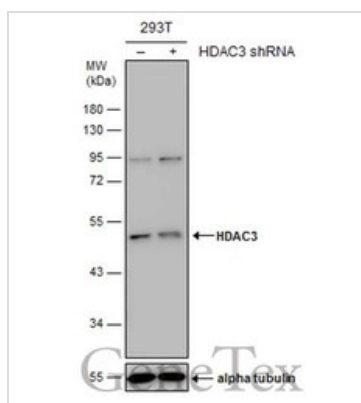
For laboratory research use only. Not for any clinical, therapeutic, or diagnostic use in humans or animals. Not for animal or human consumption.

Note

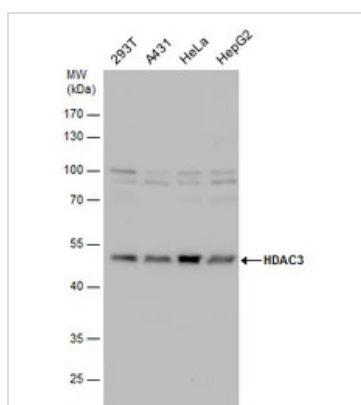
Purchasers shall not, and agree not to enable third parties to, analyze, copy, reverse engineer or otherwise attempt to determine the structure or sequence of the product.

DATA IMAGES

GTx113303 IP Image

HDAC3 antibody immunoprecipitates HDAC3 protein in IP experiments. IP Sample: 293T whole cell lysate/extract A. 40 μ g 293T whole cell lysate/extract B. Control with 2 μ g of preimmune rabbit IgG C. Immunoprecipitation of HDAC3 protein by 2 μ g of HDAC3 antibody (GTx113303) 7.5% SDS-PAGE The immunoprecipitated HDAC3 protein was detected by HDAC3 antibody (GTx113303) diluted at 1:1000. EasyBlot anti-rabbit IgG (GTx221666-01) was used as a secondary reagent.


GTx113303 WB Image

Non-transfected (-) and transfected (+) 293T whole cell extracts (30 μ g) were separated by 10% SDS-PAGE, and the membrane was blotted with HDAC3 antibody (GTx113303) diluted at 1:500. The HRP-conjugated anti-rabbit IgG antibody (GTx213110-01) was used to detect the primary antibody.


GTx113303 WB Image

HDAC3 antibody detects HDAC3 protein by Western blot analysis. Various whole cell extracts (30 μ g) were separated by 10% SDS-PAGE, and the membrane was blotted with HDAC3 antibody (GTx113303) diluted by 1:1000.



For full product information, images and publications, please visit our [website](http://www.genetex.com).