

## ATG5 antibody

Cat. No. GTX113309

<b>Host</b>	Rabbit
<b>Clonality</b>	Polyclonal
<b>Isotype</b>	IgG
<b>Applications</b>	WB, ICC/IF, IHC-P, PLA
<b>Reactivity</b>	Human, Mouse

References ( 20 )

★★★★★ Review ( 2 )

Package

100 µl, 25 µl

## PRODUCT

## Summary

ATG5 antibody detects autophagy related 5 (ATG5), a ~32kDa key protein that contributes to the formation of autophagic vesicles when conjugated to ATG12 through the actions of ATG7 and ATG10. It plays key roles in mitochondrial function, lymphocyte biology, and axonal maintenance, among others. Dysregulation of ATG5 is associated with several diseases, including sporadic Parkinson's disease, childhood asthma, and cancers.

## Applications

## Application Note

\*Optimal dilutions/concentrations should be determined by the researcher.

Suggested dilution	Recommended dilution
WB	1:500-1:3000
ICC/IF	1:100-1:1000
IHC-P	1:100-1:1000
PLA	Assay dependent

Not tested in other applications.

**Calculated MW** 32 kDa. ( [Note](#) )

## Properties

<b>Form</b>	Liquid
<b>Buffer</b>	0.1M Tris, 0.1M Glycine, 10% Glycerol
<b>Preservative</b>	0.01% Thimerosal
<b>Storage</b>	Store as concentrated solution. Centrifuge briefly prior to opening vial. For short-term storage (1-2 weeks), store at 4°C. For long-term storage, aliquot and store at -20°C or below. Avoid multiple freeze-thaw cycles.
<b>Concentration</b>	1 mg/ml (Please refer to the vial label for the specific concentration.)
<b>Immunogen</b>	Recombinant protein encompassing a sequence within the center region of human ATG5. The exact sequence is proprietary.
<b>Purification</b>	Purified by antigen-affinity chromatography.



For full product information, images and publications, please visit our [website](#).

**Conjugation**

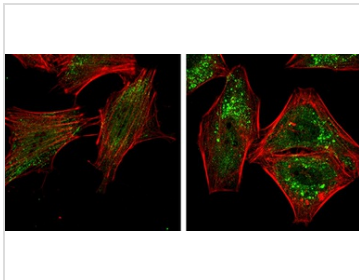
Unconjugated

**Note**

For laboratory research use only. Not for any clinical, therapeutic, or diagnostic use in humans or animals. Not for animal or human consumption.

Purchasers shall not, and agree not to enable third parties to, analyze, copy, reverse engineer or otherwise attempt to determine the structure or sequence of the product.

## DATA IMAGES

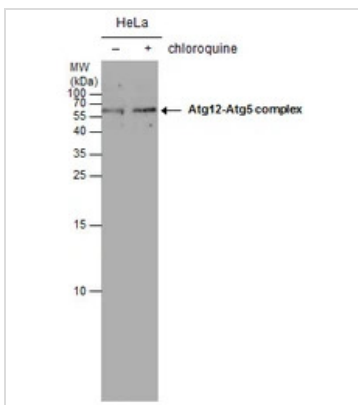
**GTX113309 ICC/IF Image**

ATG5 antibody detects ATG5 protein at autophagosome by immunofluorescent analysis.

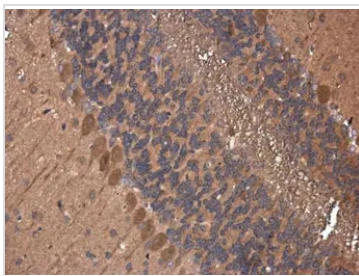
Samples: HeLa cells mock (left) and treated with 50 $\mu$ M Chloroquine for 24 hr (right) were fixed in 4% paraformaldehyde at RT for 15 min.

Green: ATG5 protein stained by ATG5 antibody (GTX113309) diluted at 1:1000.

Red: Phalloidin, a F-actin marker.

**GTX113309 WB Image**

ATG5 antibody detects ATG5 protein by western blot analysis. Un-treated (-) and treated (+, 50  $\mu$ M chloroquine treatment for 24 hrs) HeLa whole cell extracts (30  $\mu$ g) were separated by 15% SDS-PAGE, and the membrane was blotted with ATG5 antibody (GTX113309) diluted at 1:1000. The HRP-conjugated anti-rabbit IgG antibody (GTX213110-01) was used to detect the primary antibody.

**GTX113309 IHC-P Image**

ATG5 antibody detects ATG5 protein at cytoplasm in mouse brain by immunohistochemical analysis.

Sample: Paraffin-embedded mouse brain.

ATG5 antibody (GTX113309) diluted at 1:400.

Antigen Retrieval: Citrate buffer, pH 6.0, 15 min



For full product information, images and publications, please visit our [website](#).