

AKT3 antibody

Cat. No. GTX113312

Host	Rabbit
Clonality	Polyclonal
Isotype	IgG
Applications	WB, ICC/IF, IHC-P
Reactivity	Human, Mouse

References (3)

Package

100 µl, 25 µl

Applications

Application Note

*Optimal dilutions/concentrations should be determined by the researcher.

Suggested dilution	Recommended dilution
WB	1:500-1:3000
ICC/IF	1:100-1:1000
IHC-P	1:100-1:1000

Not tested in other applications.

Calculated MW	56 kDa. (Note)
Product Note	Based on internal testing result, this antibody may cross react with AKT1 protein.

Properties

Form	Liquid
Buffer	PBS, 20% Glycerol
Preservative	0.025% ProClin 300
Storage	Store as concentrated solution. Centrifuge briefly prior to opening vial. For short-term storage (1-2 weeks), store at 4°C. For long-term storage, aliquot and store at -20°C or below. Avoid multiple freeze-thaw cycles.
Concentration	2.15 mg/ml (Please refer to the vial label for the specific concentration.)
Immunogen	Recombinant protein encompassing a sequence within the N-terminus region of human Akt3. The exact sequence is proprietary.
Purification	Purified by antigen-affinity chromatography.
Conjugation	Unconjugated



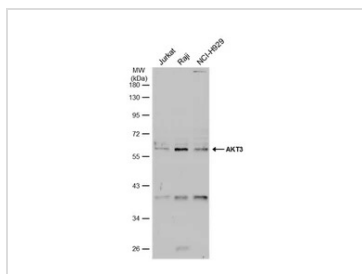
For full product information, images and publications, please visit our [website](#).

Date 2025 / 06 / 17 Page 1 of 2

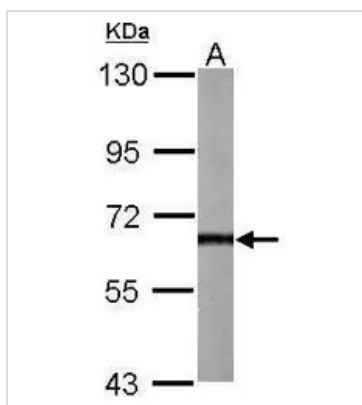
For laboratory research use only. Not for any clinical, therapeutic, or diagnostic use in humans or animals. Not for animal or human consumption.

Note

Purchasers shall not, and agree not to enable third parties to, analyze, copy, reverse engineer or otherwise attempt to determine the structure or sequence of the product.

DATA IMAGES

GTKX113312 WB Image

Various whole cell extracts (30 µg) were separated by 10% SDS-PAGE, and the membrane was blotted with AKT3 antibody (GTKX113312) diluted at 1:1000. The HRP-conjugated anti-rabbit IgG antibody (GTKX213110-01) was used to detect the primary antibody, and the signal was developed with Trident ECL plus-Enhanced.


GTKX113312 WB Image

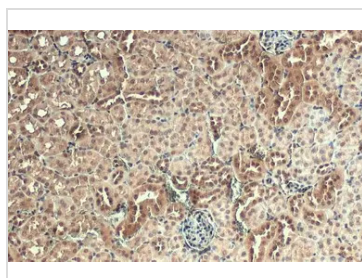
Sample (50 µg of whole cell lysate)

A: Mouse brain

7.5% SDS PAGE

GTKX113312 diluted at 1:1000

The HRP-conjugated anti-rabbit IgG antibody (GTKX213110-01) was used to detect the primary antibody.

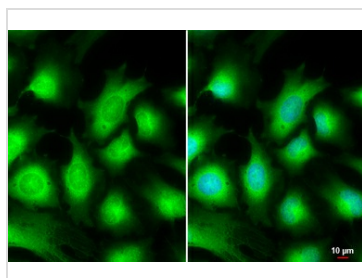

GTKX113312 IHC-P Image

AKT3 antibody detects AKT3 protein at nucleus by immunohistochemical analysis.

Sample: Paraffin-embedded mouse kidney.

AKT3 stained by AKT3 antibody (GTKX113312) diluted at 1:500.

Antigen Retrieval: Citrate buffer, pH 6.0, 15 min


GTKX113312 ICC/IF Image

AKT3 antibody detects AKT3 protein at cytoplasm by immunofluorescent analysis.

Sample: HeLa cells were fixed in 4% paraformaldehyde at RT for 15 min.

Green: AKT3 stained by AKT3 antibody (GTKX113312) diluted at 1:500.

Blue: Hoechst 33342 staining.

Scale bar= 10 µm.



For full product information, images and publications, please visit our [website](https://www.genetex.com).