

CARD11 antibody [N1N2], N-term

Cat. No. GTX113328

Host	Rabbit
Clonality	Polyclonal
Isotype	IgG
Application	WB, IHC-P
Reactivity	Human, Mouse

Package
100 µl, 25 µl

APPLICATION

Application Note

*Optimal dilutions/concentrations should be determined by the researcher.

Suggested dilution	Recommended dilution
WB	1:500-1:3000
IHC-P	1:100-1:1000

Not tested in other applications.

Calculated MW 133 kDa. ([Note](#))

PROPERTIES

Form	Liquid
Buffer	0.1M Tris, 0.1M Glycine, 10% Glycerol
Preservative	0.01% Thimerosal
Storage	Store as concentrated solution. Centrifuge briefly prior to opening vial. For short-term storage (1-2 weeks), store at 4°C. For long-term storage, aliquot and store at -20°C or below. Avoid multiple freeze-thaw cycles.
Concentration	1.02 mg/ml (Please refer to the vial label for the specific concentration.)
Immunogen	Recombinant protein encompassing a sequence within the N-terminus region of human CARD11. The exact sequence is proprietary.
Purification	Purified by antigen-affinity chromatography.
Conjugation	Unconjugated

Note

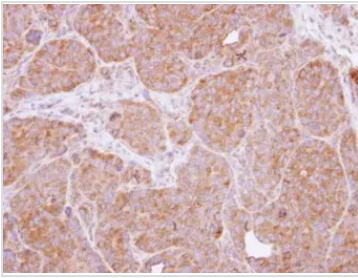
For laboratory research use only. Not for any clinical, therapeutic, or diagnostic use in humans or animals. Not for animal or human consumption.

Purchasers shall not, and agree not to enable third parties to, analyze, copy, reverse engineer or otherwise attempt to determine the structure or sequence of the product.



For full product information, images and publications, please visit our [website](#).

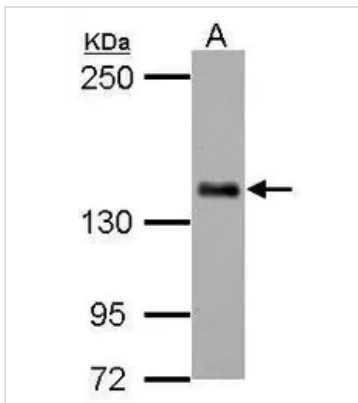
DATA IMAGES



GTX113328 IHC-P Image

Immunohistochemical analysis of paraffin-embedded SW480 xenograft, using CARD11(GTX113328) antibody at 1:100 dilution.

Antigen Retrieval: Citrate buffer, pH 6.0, 15 min



GTX113328 WB Image

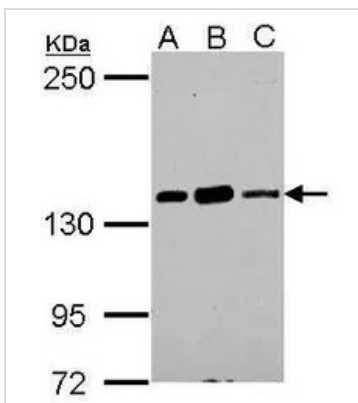
CARD11 antibody [N1N2], N-term detects CARD11 protein by western blot analysis.

A. 30 µg BCL-1 whole cell lysate/extract

5% SDS-PAGE

CARD11 antibody [N1N2], N-term (GTX113328) dilution: 1:1000

The HRP-conjugated anti-rabbit IgG antibody (GTX213110-01) was used to detect the primary antibody.



GTX113328 WB Image

CARD11 antibody [N1N2], N-term detects CARD11 protein by western blot analysis.

A. 30 µg Raji whole cell lysate/extract

B. 30 µg K562 whole cell lysate/extract

C. 30 µg NCI-H929 whole cell lysate/extract

5% SDS-PAGE

CARD11 antibody [N1N2], N-term (GTX113328) dilution: 1:1000

The HRP-conjugated anti-rabbit IgG antibody (GTX213110-01) was used to detect the primary antibody.



For full product information, images and publications, please visit our [website](https://www.genetex.com).