

VpreB antibody [N3C3]

Cat. No. GTX113368

Host	Rabbit
Clonality	Polyclonal
Isotype	IgG
Applications	WB
Reactivity	Human

Package
100 µl, 25 µl

Applications

Application Note

*Optimal dilutions/concentrations should be determined by the researcher.

Suggested dilution	Recommended dilution
--------------------	----------------------

WB	1:500-1:3000
----	--------------

Not tested in other applications.

Calculated MW	17 kDa. (Note)
----------------------	----------------------------------

Properties

Form	Liquid
-------------	--------

Buffer	0.1M Tris, 0.1M Glycine, 10% Glycerol
---------------	---------------------------------------

Preservative	0.01% Thimerosal
---------------------	------------------

Storage	Store as concentrated solution. Centrifuge briefly prior to opening vial. For short-term storage (1-2 weeks), store at 4°C. For long-term storage, aliquot and store at -20°C or below. Avoid multiple freeze-thaw cycles.
----------------	--

Concentration	1 mg/ml (Please refer to the vial label for the specific concentration.)
----------------------	--

Immunogen	Carrier-protein conjugated synthetic peptide encompassing a sequence within the C-terminus region of human VpreB. The exact sequence is proprietary.
------------------	--

Purification	Purified by antigen-affinity chromatography.
---------------------	--

Conjugation	Unconjugated
--------------------	--------------

Note

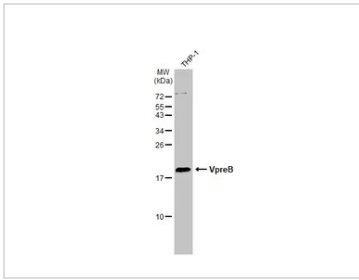
For laboratory research use only. Not for any clinical, therapeutic, or diagnostic use in humans or animals. Not for animal or human consumption.

Purchasers shall not, and agree not to enable third parties to, analyze, copy, reverse engineer or otherwise attempt to determine the structure or sequence of the product.



For full product information, images and publications, please visit our [website](#).

DATA IMAGES

**GTX113368 WB Image**

Whole cell extract (30 μ g) was separated by 15% SDS-PAGE, and the membrane was blotted with VpreB antibody [N3C3] (GTX113368) diluted at 1:1000. The HRP-conjugated anti-rabbit IgG antibody (GTX213110-01) was used to detect the primary antibody.



For full product information, images and publications, please visit our [website](#).