

MST3 antibody [N2C1], Internal

Cat. No. GTX113371

Host	Rabbit
Clonality	Polyclonal
Isotype	IgG
Applications	WB, ICC/IF, IHC-P
Reactivity	Human, Rat

Package
100 µl, 25 µl

Applications

Application Note

*Optimal dilutions/concentrations should be determined by the researcher.

Suggested dilution	Recommended dilution
WB	1:500-1:3000
ICC/IF	1:100-1:1000
IHC-P	1:100-1:1000

Not tested in other applications.

Calculated MW 49 kDa. ([Note](#))

Properties

Form	Liquid
Buffer	0.1M Tris, 0.1M Glycine, 10% Glycerol
Preservative	0.01% Thimerosal
Storage	Store as concentrated solution. Centrifuge briefly prior to opening vial. For short-term storage (1-2 weeks), store at 4°C. For long-term storage, aliquot and store at -20°C or below. Avoid multiple freeze-thaw cycles.
Concentration	0.94 mg/ml (Please refer to the vial label for the specific concentration.)
Immunogen	Carrier-protein conjugated synthetic peptide encompassing a sequence within the center region of human MST3. The exact sequence is proprietary.
Purification	Purified by antigen-affinity chromatography.
Conjugation	Unconjugated

Note

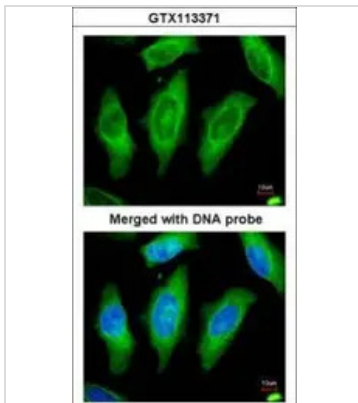
For laboratory research use only. Not for any clinical, therapeutic, or diagnostic use in humans or animals. Not for animal or human consumption.

Purchasers shall not, and agree not to enable third parties to, analyze, copy, reverse engineer or otherwise attempt to determine the structure or sequence of the product.



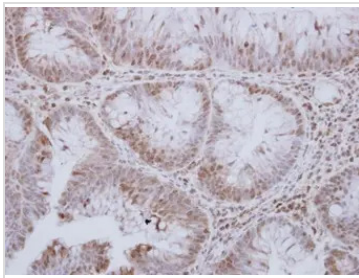
For full product information, images and publications, please visit our [website](#).

DATA IMAGES



GTX113371 ICC/IF Image

Immunofluorescence analysis of paraformaldehyde-fixed HeLa, using STK24(GTX113371) antibody at 1:200 dilution.



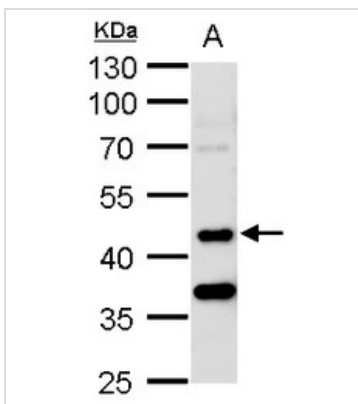
GTX113371 IHC-P Image

STK24 antibody [N2C1], Internal detects STK24 protein at cytosol and nucleus on human breast carcinoma by immunohistochemical analysis.

Sample: Paraffin-embedded human breast carcinoma.

STK24 antibody [N2C1], Internal (GTX113371) dilution: 1:250.

Antigen Retrieval: Trilogy™ (EDTA based, pH 8.0) buffer, 15min



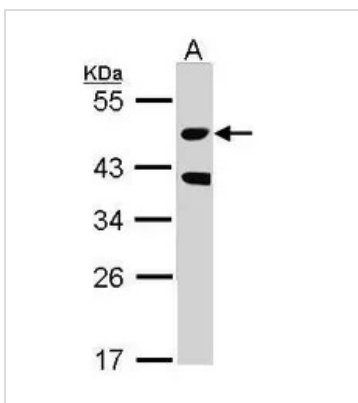
GTX113371 WB Image

STK24 antibody [N2C1], Internal detects STK24 protein by western blot analysis.

A. 50 µg rat brain lysate/extract

10 % SDS-PAGE

STK24 antibody [N2C1], Internal (GTX113371) dilution: 1:1000



GTX113371 WB Image

Sample (30 ug of whole cell lysate)

A: Raji

10% SDS PAGE

GTX113371 diluted at 1:1000



For full product information, images and publications, please visit our [website](https://www.genetex.com).