

Annexin V antibody [N2C3]

Cat. No. GTX113384

Host	Rabbit
Clonality	Polyclonal
Isotype	IgG
Application	WB, FACS
Reactivity	Human, Mouse

Reference (1)
 Package
 100 µl, 25 µl

APPLICATION

Application Note

*Optimal dilutions/concentrations should be determined by the researcher.

Suggested dilution	Recommended dilution
WB	1:500-1:10000
FACS	1:50-1:200

Not tested in other applications.

Calculated MW 36 kDa. ([Note](#))

PROPERTIES

Form	Liquid
Buffer	0.1M Tris, 0.1M Glycine, 10% Glycerol
Preservative	0.01% Thimerosal
Storage	Store as concentrated solution. Centrifuge briefly prior to opening vial. For short-term storage (1-2 weeks), store at 4°C. For long-term storage, aliquot and store at -20°C or below. Avoid multiple freeze-thaw cycles.
Concentration	0.54 mg/ml (Please refer to the vial label for the specific concentration.)
Immunogen	Recombinant protein encompassing a sequence within the center region of human Annexin V. The exact sequence is proprietary.
Purification	Purified by antigen-affinity chromatography.
Conjugation	Unconjugated

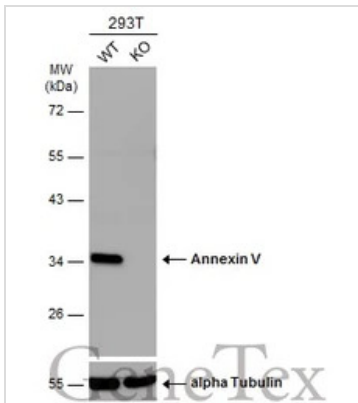
Note

For laboratory research use only. Not for any clinical, therapeutic, or diagnostic use in humans or animals. Not for animal or human consumption.

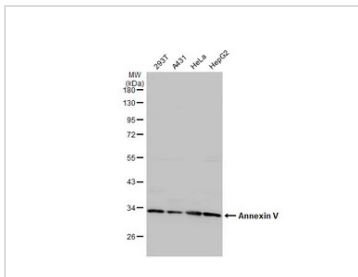
Purchasers shall not, and agree not to enable third parties to, analyze, copy, reverse engineer or otherwise attempt to determine the structure or sequence of the product.



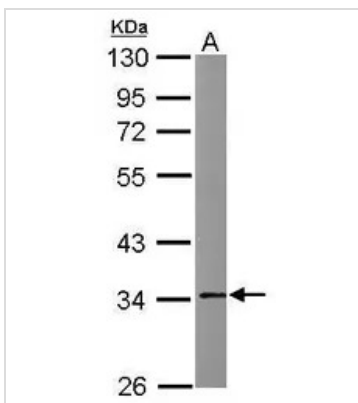
For full product information, images and publications, please visit our [website](#).

DATA IMAGES

GTX113384 WB Image

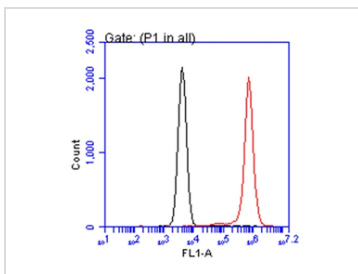
Wild-type (WT) and Annexin V knockout (KO) 293T cell extracts (30 µg) were separated by 10% SDS-PAGE, and the membrane was blotted with Annexin V antibody [N2C3] (GTX113384) diluted at 1:5000. The HRP-conjugated anti-rabbit IgG antibody (GTX213110-01) was used to detect the primary antibody.


GTX113384 WB Image

Various whole cell extracts (30 µg) were separated by 10% SDS-PAGE, and the membrane was blotted with Annexin V antibody [N2C3] (GTX113384) diluted at 1:1000. The HRP-conjugated anti-rabbit IgG antibody (GTX213110-01) was used to detect the primary antibody.


GTX113384 WB Image

Sample (50 ug of whole cell lysate)
A: Mouse brain
10% SDS PAGE
GTX113384 diluted at 1:1000


GTX113384 FACS Image

Annexin V antibody [N2C3] (GTX113384) detects Annexin V protein by flow cytometry analysis.
Sample: HeLa cell.
Black: Unlabelled sample was used as a control.
Red: Annexin V antibody [N2C3] (GTX113384) dilution: 1:50.
Acquisition of 20,000 events were collected for FACS analysis.



For full product information, images and publications, please visit our [website](https://www.genetex.com).