

NSE antibody [C1C3]

Cat. No. GTX113428

Host	Rabbit
Clonality	Polyclonal
Isotype	IgG
Application	WB, ICC/IF, IHC-P, IHC-Fr
Reactivity	Human, Mouse, Rat, Zebrafish

Reference (2)
Package
100 µl, 25 µl

APPLICATION

Application Note

*Optimal dilutions/concentrations should be determined by the researcher.

Suggested dilution	Recommended dilution
WB	1:1000-1:10000
ICC/IF	1:100-1:1000
IHC-P	Assay dependent
IHC-Fr	1:100-1:1000

Not tested in other applications.

Calculated MW 47 kDa. ([Note](#))

Product Note This antibody was raised against human NSE (ENO2) protein, but it may cross react other family members based on sequence homology.

PROPERTIES

Form	Liquid
Buffer	0.1M Tris, 0.1M Glycine, 10% Glycerol
Preservative	0.01% Thimerosal
Storage	Store as concentrated solution. Centrifuge briefly prior to opening vial. For short-term storage (1-2 weeks), store at 4°C. For long-term storage, aliquot and store at -20°C or below. Avoid multiple freeze-thaw cycles.
Concentration	1 mg/ml (Please refer to the vial label for the specific concentration.)
Immunogen	Recombinant protein encompassing a sequence within the center region of human NSE. The exact sequence is proprietary.
Purification	Purified by antigen-affinity chromatography.
Conjugation	Unconjugated



For full product information, images and publications, please visit our [website](#).

For laboratory research use only. Not for any clinical, therapeutic, or diagnostic use in humans or animals. Not for animal or human consumption.

Note

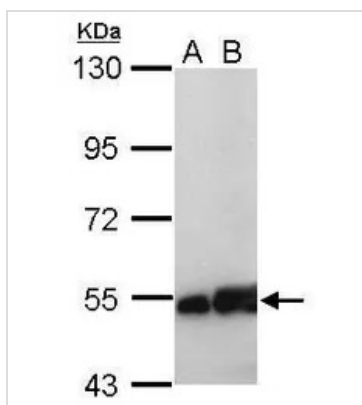
Purchasers shall not, and agree not to enable third parties to, analyze, copy, reverse engineer or otherwise attempt to determine the structure or sequence of the product.

DATA IMAGES



GTX113428 IHC-P Image

Immunohistochemical analysis of paraffin-embedded zebrafish tissue, using NSE antibody [C1C3] (GTX113428) at 1:300 dilution.



GTX113428 WB Image

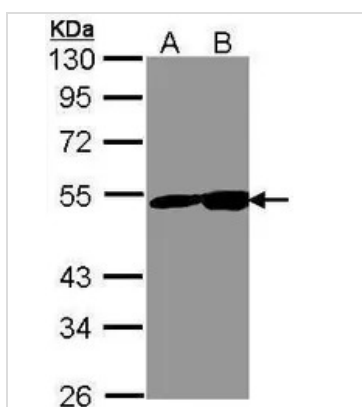
Sample (30 µg of whole cell lysate)

A: whole zebrafish

B: zebrafish muscle

10% SDS PAGE

GTX113428 diluted at 1:1000



GTX113428 WB Image

Sample (30 ug of whole cell lysate)

A: 293T

B: A431 (GTX27909)

10% SDS PAGE

GTX113428 diluted at 1:1000



For full product information, images and publications, please visit our [website](https://www.genetex.com).