

MAX antibody

Cat. No. GTX113492

Host	Rabbit
Clonality	Polyclonal
Isotype	IgG
Applications	WB, IP
Reactivity	Human

References (2)

Package

100 µl, 25 µl

Applications

Application Note

*Optimal dilutions/concentrations should be determined by the researcher.

Suggested dilution	Recommended dilution
WB	1:500-1:3000
IP	1:100-1:500

Not tested in other applications.

Calculated MW 18 kDa. ([Note](#))

Product Note IP/MS validation was supported by references (PMID:30377412)

Properties

Form	Liquid
Buffer	PBS, 20% Glycerol
Preservative	0.025% ProClin 300
Storage	Store as concentrated solution. Centrifuge briefly prior to opening vial. For short-term storage (1-2 weeks), store at 4°C. For long-term storage, aliquot and store at -20°C or below. Avoid multiple freeze-thaw cycles.
Concentration	1.07 mg/ml (Please refer to the vial label for the specific concentration.)
Immunogen	Recombinant protein encompassing a sequence within the center region of human MAX. The exact sequence is proprietary.
Purification	Purified by antigen-affinity chromatography.
Conjugation	Unconjugated

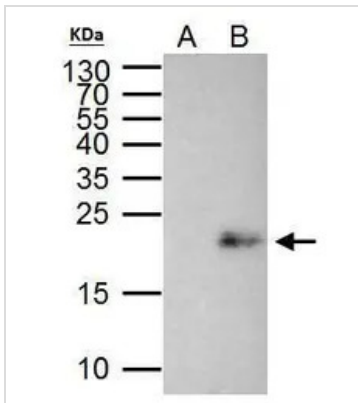
Note

For laboratory research use only. Not for any clinical, therapeutic, or diagnostic use in humans or animals. Not for animal or human consumption.

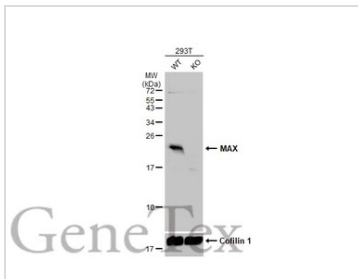
Purchasers shall not, and agree not to enable third parties to, analyze, copy, reverse engineer or otherwise attempt to determine the structure or sequence of the product.



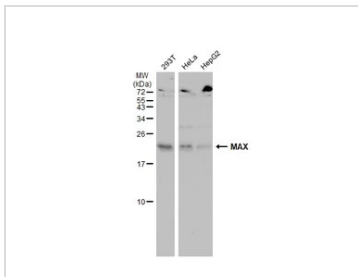
For full product information, images and publications, please visit our [website](#).

DATA IMAGES

GTx113492 IP Image

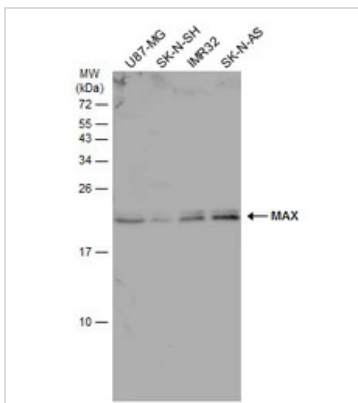
MAX antibody immunoprecipitates MAX protein in IP experiments. IP Sample: 293T whole cell lysate/extract A. Control with 2 μ g of preimmune rabbit IgG B. Immunoprecipitation of MAX protein by 2 μ g of MAX antibody (GTx113492) 15% SDS-PAGE The immunoprecipitated MAX protein was detected by MAX antibody (GTx113492) diluted at 1:1000. EasyBlot anti-rabbit IgG (GTx221666-01) was used as a secondary reagent.


GTx113492 WB Image

Wild-type (WT) and MAX knockout (KO) 293T cell extracts (30 μ g) were separated by 15% SDS-PAGE, and the membrane was blotted with MAX antibody (GTx113492) diluted at 1:500. The HRP-conjugated anti-rabbit IgG antibody (GTx213110-01) was used to detect the primary antibody.


GTx113492 WB Image

Various whole cell extracts (30 μ g) were separated by 15% SDS-PAGE, and the membrane was blotted with MAX antibody (GTx113492) diluted at 1:500. The HRP-conjugated anti-rabbit IgG antibody (GTx213110-01) was used to detect the primary antibody, and the signal was developed with Trident ECL plus-Enhanced.


GTx113492 WB Image

Various whole cell extracts (30 μ g) were separated by 15% SDS-PAGE, and the membrane was blotted with MAX antibody (GTx113492) diluted at 1:500. The HRP-conjugated anti-rabbit IgG antibody (GTx213110-01) was used to detect the primary antibody.



For full product information, images and publications, please visit our [website](http://www.genetex.com).