

## LXR beta antibody [N2C2], Internal

Cat. No. GTX113571

Host	Rabbit
Clonality	Polyclonal
Isotype	IgG
Applications	WB, ICC/IF
Reactivity	Human, Mouse

References ( 5 )

Package

100 µl, 25 µl

## Applications

## Application Note

\*Optimal dilutions/concentrations should be determined by the researcher.

Suggested dilution	Recommended dilution
WB	1:500-1:3000
ICC/IF	1:100-1:1000

Not tested in other applications.

Calculated MW 51 kDa. ( [Note](#) )

## Properties

Form	Liquid
Buffer	0.1M Tris, 0.1M Glycine, 20% Glycerol
Preservative	0.01% Thimerosal
Storage	Store as concentrated solution. Centrifuge briefly prior to opening vial. For short-term storage (1-2 weeks), store at 4°C. For long-term storage, aliquot and store at -20°C or below. Avoid multiple freeze-thaw cycles.
Concentration	1 mg/ml (Please refer to the vial label for the specific concentration.)
Immunogen	Recombinant protein encompassing a sequence within the center region of human LXR beta. The exact sequence is proprietary.
Purification	Purified by antigen-affinity chromatography.
Conjugation	Unconjugated

## Note

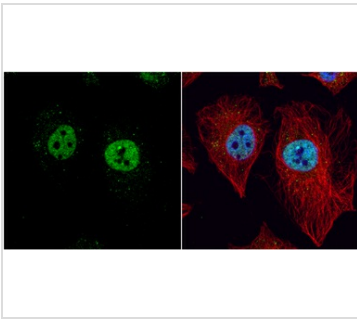
For laboratory research use only. Not for any clinical, therapeutic, or diagnostic use in humans or animals. Not for animal or human consumption.

Purchasers shall not, and agree not to enable third parties to, analyze, copy, reverse engineer or otherwise attempt to determine the structure or sequence of the product.



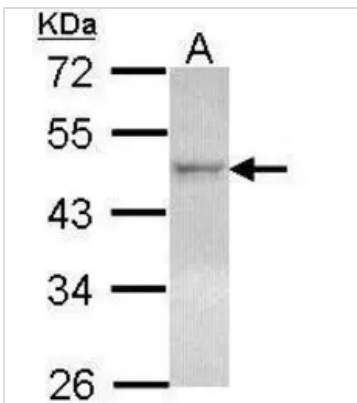
For full product information, images and publications, please visit our [website](#).

## DATA IMAGES



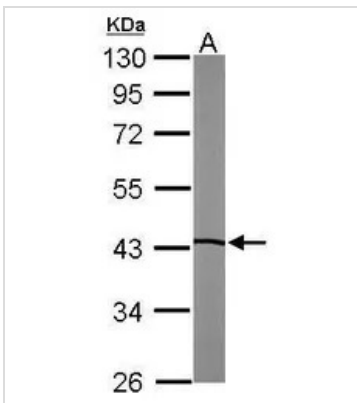
### GTX113571 ICC/IF Image

LXR beta antibody [N2C2], Internal detects LXR beta protein at nucleus by immunofluorescent analysis.  
 Sample: HeLa cells were fixed in 4% paraformaldehyde at RT for 15 min.  
 Green: LXR beta protein stained by LXR beta antibody [N2C2], Internal (GTX113571) diluted at 1:200.  
 Red: alpha Tubulin, a cytoskeleton marker, stained by alpha Tubulin antibody [GT114] (GTX628802) diluted at 1:1000.  
 Blue: Hoechst 33342 staining.



### GTX113571 WB Image

Sample (30 ug of whole cell lysate)  
 A: HeLa  
 10% SDS PAGE  
 GTX113571 diluted at 1:1000



### GTX113571 WB Image

Sample (50 ug of whole cell lysate)  
 A: Mouse brain  
 10% SDS PAGE  
 GTX113571 diluted at 1:1000



For full product information, images and publications, please visit our [website](https://www.genetex.com).