

GDF5 antibody

Cat. No. GTX113580

Host	Rabbit
Clonality	Polyclonal
Isotype	IgG
Applications	WB, ICC/IF, IHC-P, Functional Assay
Reactivity	Human

References (3)

Package

100 µl, 25 µl

Applications

Application Note

*Optimal dilutions/concentrations should be determined by the researcher.

Suggested dilution	Recommended dilution
WB	1:500-1:3000
ICC/IF	Assay dependent
IHC-P	1:100-1:1000
Functional Assay	Assay dependent

Not tested in other applications.

Calculated MW 55 kDa. ([Note](#))

Product Note KO/KD validation is based on published data (PMID: 23226264).

Properties

Form	Liquid
Buffer	0.1M Tris, 0.1M Glycine, 20% Glycerol
Preservative	0.01% Thimerosal
Storage	Store as concentrated solution. Centrifuge briefly prior to opening vial. For short-term storage (1-2 weeks), store at 4°C. For long-term storage, aliquot and store at -20°C or below. Avoid multiple freeze-thaw cycles.
Concentration	0.65 mg/ml (Please refer to the vial label for the specific concentration.)
Immunogen	Recombinant protein encompassing a sequence within the center region of human GDF5. The exact sequence is proprietary.
Purification	Purified by antigen-affinity chromatography.
Conjugation	Unconjugated



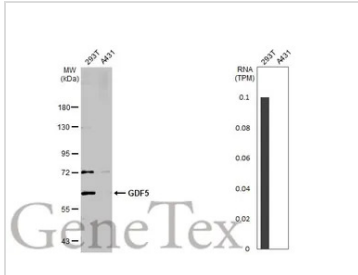
For full product information, images and publications, please visit our [website](#).

Date 2026 / 02 / 03 Page 1 of 2

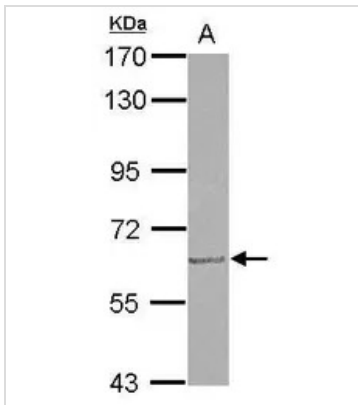
For laboratory research use only. Not for any clinical, therapeutic, or diagnostic use in humans or animals. Not for animal or human consumption.

Note

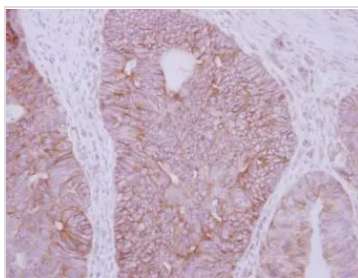
Purchasers shall not, and agree not to enable third parties to, analyze, copy, reverse engineer or otherwise attempt to determine the structure or sequence of the product.

DATA IMAGES

GTX113580 WB Image

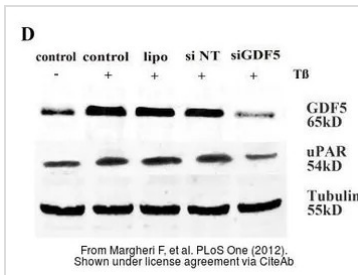
Various whole cell extracts (30 Åµg) were separated by 7.5% SDS-PAGE, and the membrane was blotted with GDF5 antibody (GTX113580) diluted at 1:1000. The HRP-conjugated anti-rabbit IgG antibody (GTX213110-01) was used to detect the primary antibody, and the signal was developed with Trident ECL plus-Enhanced. Corresponding RNA expression data for the same cell lines are based on Human Protein Atlas program.


GTX113580 WB Image

Sample (30 ug of whole cell lysate)
A: IMR32
7.5% SDS PAGE
GTX113580 diluted at 1:1000


GTX113580 IHC-P Image

Immunohistochemical analysis of paraffin-embedded human colon carcinoma, using GDF5(GTX113580) antibody at 1:250 dilution.
Antigen Retrieval: Trilogy™ (EDTA based, pH 8.0) buffer, 15min


GTX113580 WB Image

The data was published in the journal PLoS One in 2012. [PMID: 23226264](https://pubmed.ncbi.nlm.nih.gov/23226264/)



For full product information, images and publications, please visit our [website](https://www.genetex.com).