

## AKR1C3 antibody [N1C1]

**Cat. No. GTX113586**

<b>Host</b>	Rabbit
<b>Clonality</b>	Polyclonal
<b>Isotype</b>	IgG
<b>Applications</b>	WB, IHC-P
<b>Reactivity</b>	Human

References ( 1 )

Package

100 µl, 25 µl

## Applications

**Application Note**

\*Optimal dilutions/concentrations should be determined by the researcher.

Suggested dilution	Recommended dilution
WB	1:1000-1:10000
IHC-P	1:100-1:1000

Not tested in other applications.

**Calculated MW** 37 kDa. ( [Note](#) )

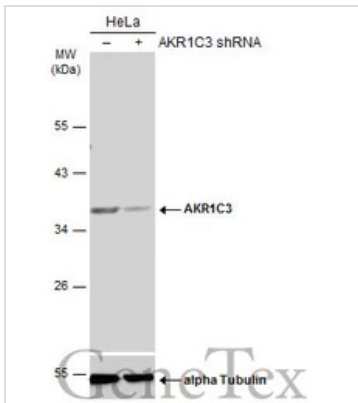
## Properties

<b>Form</b>	Liquid
<b>Buffer</b>	0.1M Tris, 0.1M Glycine, 20% Glycerol
<b>Preservative</b>	0.01% Thimerosal
<b>Storage</b>	Store as concentrated solution. Centrifuge briefly prior to opening vial. For short-term storage (1-2 weeks), store at 4°C. For long-term storage, aliquot and store at -20°C or below. Avoid multiple freeze-thaw cycles.
<b>Concentration</b>	1 mg/ml (Please refer to the vial label for the specific concentration.)
<b>Immunogen</b>	Recombinant protein encompassing a sequence within the center region of human AKR1C3. The exact sequence is proprietary.
<b>Purification</b>	Purified by antigen-affinity chromatography.
<b>Conjugation</b>	Unconjugated
<b>Note</b>	For laboratory research use only. Not for any clinical, therapeutic, or diagnostic use in humans or animals. Not for animal or human consumption.  Purchasers shall not, and agree not to enable third parties to, analyze, copy, reverse engineer or otherwise attempt to determine the structure or sequence of the product.

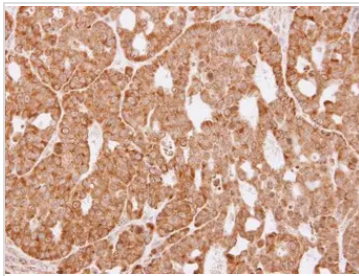


For full product information, images and publications, please visit our [website](#).

## DATA IMAGES

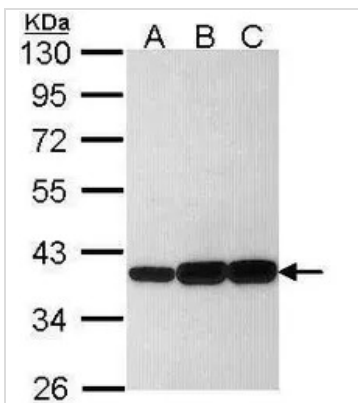
**GTX113586 WB Image**

Non-transfected (-) and transfected (+) HeLa whole cell extracts (50 µg) were separated by 10% SDS-PAGE, and the membrane was blotted with AKR1C3 antibody [N1C1] (GTX113586) diluted at 1:5000. The HRP-conjugated anti-rabbit IgG antibody (GTX213110-01) was used to detect the primary antibody.

**GTX113586 IHC-P Image**

Immunohistochemical analysis of paraffin-embedded NCI-N87 xenograft, using AKR1C3(GTX113586) antibody at 1:100 dilution.

Antigen Retrieval: Citrate buffer, pH 6.0, 15 min

**GTX113586 WB Image**

Sample (30 ug of whole cell lysate)

A: HeLa

B: Hep G2 (GTX27900)

C: Molt-4 (GTX27912)

10% SDS PAGE

GTX113586 diluted at 1:1000



For full product information, images and publications, please visit our [website](http://www.genetex.com).