

TNFRSF14 antibody [N2C3]

Cat. No. GTX113589

Host	Rabbit
Clonality	Polyclonal
Isotype	IgG
Applications	WB
Reactivity	Human, Mouse

Package
100 µl, 25 µl

Applications

Application Note

*Optimal dilutions/concentrations should be determined by the researcher.

Suggested dilution **Recommended dilution**

WB 1:500-1:10000

Not tested in other applications.

Calculated MW 30 kDa. ([Note](#))

Properties

Form Liquid**Buffer** PBS, 20% Glycerol**Preservative** 0.025% ProClin 300**Storage** Store as concentrated solution. Centrifuge briefly prior to opening vial. For short-term storage (1-2 weeks), store at 4°C. For long-term storage, aliquot and store at -20°C or below. Avoid multiple freeze-thaw cycles.**Concentration** 0.78 mg/ml (Please refer to the vial label for the specific concentration.)**Immunogen** Recombinant protein encompassing a sequence within the center region of human TNFRSF14. The exact sequence is proprietary.**Purification** Purified by antigen-affinity chromatography.**Conjugation** Unconjugated**Note**

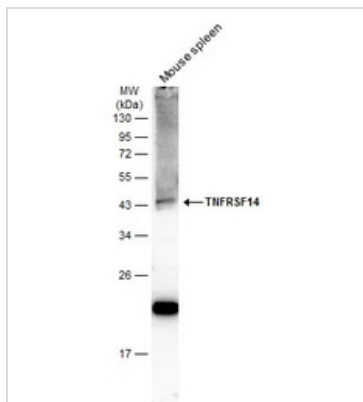
For laboratory research use only. Not for any clinical, therapeutic, or diagnostic use in humans or animals. Not for animal or human consumption.

Purchasers shall not, and agree not to enable third parties to, analyze, copy, reverse engineer or otherwise attempt to determine the structure or sequence of the product.



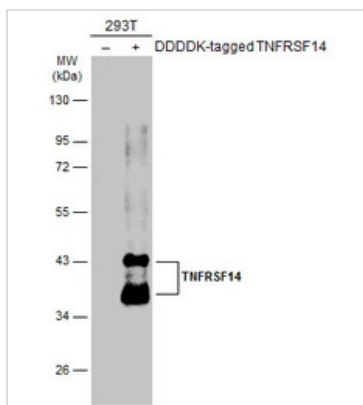
For full product information, images and publications, please visit our [website](#).

DATA IMAGES



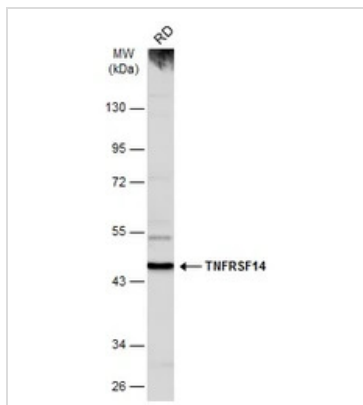
GTX113589 WB Image

Mouse tissue extract (30 µg) was separated by 10% SDS-PAGE, and the membrane was blotted with TNFRSF14 antibody [N2C3] (GTX113589) diluted at 1:500. The HRP-conjugated anti-rabbit IgG antibody (GTX213110-01) was used to detect the primary antibody.



GTX113589 WB Image

Non-transfected (-) and transfected (+) 293T whole cell extracts (30 µg) were separated by 10% SDS-PAGE, and the membrane was blotted with TNFRSF14 antibody [N2C3] (GTX113589) diluted at 1:5000. The HRP-conjugated anti-rabbit IgG antibody (GTX213110-01) was used to detect the primary antibody.



GTX113589 WB Image

Whole cell extract (30 µg) was separated by 10% SDS-PAGE, and the membrane was blotted with TNFRSF14 antibody [N2C3] (GTX113589) diluted at 1:500. The HRP-conjugated anti-rabbit IgG antibody (GTX213110-01) was used to detect the primary antibody.



For full product information, images and publications, please visit our [website](#).