

## BUB3 antibody [N1C1]

Cat. No. GTX113595

|             |                   |
|-------------|-------------------|
| Host        | Rabbit            |
| Clonality   | Polyclonal        |
| Isotype     | IgG               |
| Application | WB, IHC-P, IP     |
| Reactivity  | Human, Mouse, Rat |

Reference ( 2 )

Package

100 µl, 25 µl

## APPLICATION

## Application Note

\*Optimal dilutions/concentrations should be determined by the researcher.

| Suggested dilution | Recommended dilution |
|--------------------|----------------------|
| WB                 | 1:500-1:3000         |
| IHC-P              | 1:100-1:1000         |
| IP                 | 1:100-1:500          |

Not tested in other applications.

Calculated MW 37 kDa. ( [Note](#) )

Product Note IP/MS validation was supported by references (PMID:30377413)

## PROPERTIES

|               |  |
|---------------|--|
| Form          | Liquid   |
| Buffer        | 0.1M Tris, 0.1M Glycine, 20% Glycerol  |
| Preservative  | 0.01% Thimerosal   |
| Storage       | Store as concentrated solution. Centrifuge briefly prior to opening vial. For short-term storage (1-2 weeks), store at 4°C. For long-term storage, aliquot and store at -20°C or below. Avoid multiple freeze-thaw cycles. |
| Concentration | 0.32 mg/ml (Please refer to the vial label for the specific concentration.)  |
| Immunogen     | Recombinant protein encompassing a sequence within the center region of human BUB3. The exact sequence is proprietary.   |
| Purification  | Purified by antigen-affinity chromatography.   |
| Conjugation   | Unconjugated   |



For full product information, images and publications, please visit our [website](#).

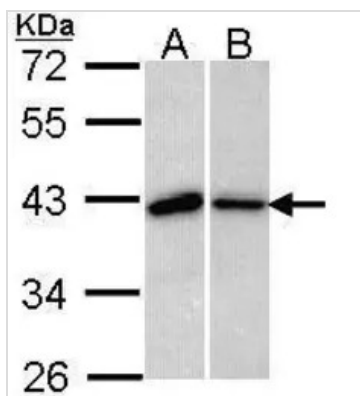
Date 2024 / 05 / 03 Page 1 of 2

For laboratory research use only. Not for any clinical, therapeutic, or diagnostic use in humans or animals. Not for animal or human consumption.

## Note

Purchasers shall not, and agree not to enable third parties to, analyze, copy, reverse engineer or otherwise attempt to determine the structure or sequence of the product.

## DATA IMAGES



### GTx113595 WB Image

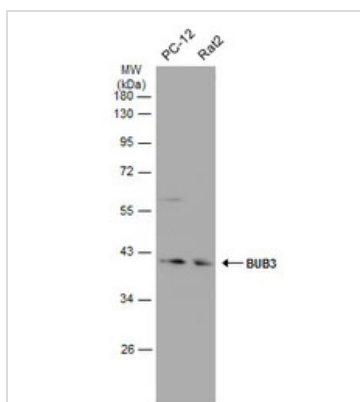
Sample (30 ug of whole cell lysate)

A: 293T

B: H1299

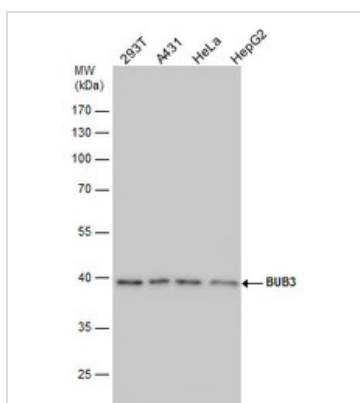
10% SDS PAGE

GTx113595 diluted at 1:1000



### GTx113595 WB Image

Various whole cell extracts (30 µg) were separated by 10% SDS-PAGE, and the membrane was blotted with BUB3 antibody [N1C1] (GTx113595) diluted at 1:500. The HRP-conjugated anti-rabbit IgG antibody (GTx213110-01) was used to detect the primary antibody.



### GTx113595 WB Image

BUB3 antibody detects BUB3 protein by western blot analysis. Various whole cell extracts (30 µg) were separated by 10% SDS-PAGE, and the membrane was blotted with BUB3 antibody (GTx113595) diluted by 1:1000.



For full product information, images and publications, please visit our [website](https://www.genetex.com).