

## GFP antibody

Cat. No. GTX113617

<b>Host</b>	Rabbit
<b>Clonality</b>	Polyclonal
<b>Isotype</b>	IgG
<b>Applications</b>	WB, ICC/IF, IHC-P, IHC-Fr, IHC-Wm, IP, Dot, ELISA, IHC
<b>Reactivity</b>	Species independent

References ( 211 )

★★★★☆ Review ( 9 )

Package

100 µl, 25 µl

## PRODUCT

## Summary

GFP antibody recognizes the green fluorescent protein (GFP), a fluorophore in widespread use in biomedical research. GFP fluorescence allows real-time study of physiological processes involving fusion proteins or GFP-expressing cells. This antibody also detects other GFP variants, including EGFP and YFP, but not red fluorescent protein (RFP).

## Applications

## Application Note

\*Optimal dilutions/concentrations should be determined by the researcher.

Suggested dilution	Recommended dilution
WB	1:5000-1:20000
ICC/IF	1:1000-1:5000
IHC-P	Assay dependent
IHC-Fr	Assay dependent
IHC-Wm	1:100-1:500
IP	1:100-1:500
Dot	Assay dependent
ELISA	Assay dependent
IHC	Assay dependent

Not tested in other applications.

**Calculated MW** 29 kDa. ( [Note](#) )

**Product Note** This antibody reacts with GFP variants including GFP, EGFP, and YFP.

## Properties

<b>Form</b>	Liquid
<b>Buffer</b>	PBS, 1% BSA, 20% Glycerol
<b>Preservative</b>	0.025% ProClin 300



For full product information, images and publications, please visit our [website](#).

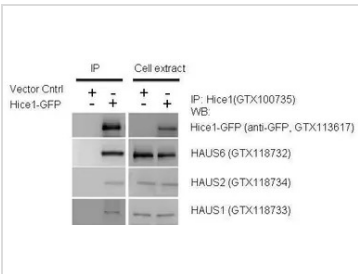
<b>Storage</b>	Store as concentrated solution. Centrifuge briefly prior to opening vial. For short-term storage (1-2 weeks), store at 4°C. For long-term storage, aliquot and store at -20°C or below. Avoid multiple freeze-thaw cycles.
<b>Concentration</b>	0.17 mg/ml (Please refer to the vial label for the specific concentration.)
<b>Immunogen</b>	Full length GFP recombinant protein
<b>Purification</b>	Purified by antigen-affinity chromatography.
<b>Conjugation</b>	Unconjugated
<b>Note</b>	For laboratory research use only. Not for any clinical, therapeutic, or diagnostic use in humans or animals. Not for animal or human consumption.  Purchasers shall not, and agree not to enable third parties to, analyze, copy, reverse engineer or otherwise attempt to determine the structure or sequence of the product.

**DATA IMAGES**



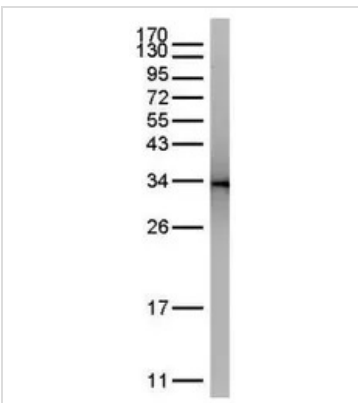
**GTX113617 IHC-Wm Image**

Immunohistochemical analysis (whole mount) of transgenic zebrafish embryo (fixed with ice-cold acetone), using GFP(GTX113617) antibody at 1:200 dilution.



**GTX113617 WB Image**

IP-WB assay to show that Hice1 (GTX113617) co-immunoprecipitated with other Augmin components HAUS6 (GTX118732), HAUS2 (GTX118734) and HAUS1 (GTX118733) in U2OS cells. The HRP-conjugated anti-rabbit IgG antibody (GTX213110-01) was used to detect the primary antibody.



**GTX113617 IP Image**

GFP was immunoprecipitated from bacterial GFP-expressing lysate using 1 ug of anti-GFP antibody (GTX113617). The precipitated GFP was detected by GTX113617 diluted at 1:15000.



For full product information, images and publications, please visit our [website](#).